

# COMPANY INTRODUCTION

## - HISTORY

Qingdao Grandstone Tyre Co.,Ltd is a professional and reputable tyre supplier headquartered in Qingdao,China.Grandstone specializes in designing,manufacturing, exporting and premium after sales service since 2001.

## - PRODUCTS 'RANGE CERTIFICATIONS

Grandstone supplies full range of tyres(TBR,PCR,TBB,LTR,OTR,AGR,and Industrial Tyres),wheels and Batteries.Obtained with the certifications of CCC,DOT,ECE,GCC, ISO/TS16949,SONCAP etc.,certified trusted and reliable,Grandstone tyres have been exported to more than 100 countries and regions.

## - STRENGTHS

Proudly owned brands GRANDSTONE JUMBO constantly innovate to make it safer, more efficient and environmentally friendly for users around the world.With the advanced equipments,technology,strict quality control system,efficient production and logistics management,Grandstone promises top-level quality and timely shipment,our aim is to offer VIP clients customized service and efficient solution to improve customer's satisfaction.

## - MISSION

With the values of honesty,responsibility and innovation,Grandstone delicates itself to growing up and creating value with the partners together.

## QINGDAO GRANDSTONE TYRE CO., LTD

ADD: HISENSE BUILDING 3#B, NO.20 ZHUZHOU ROAD, QINGDAO,CHINA

TEL:0086-80916215/80916231

E-MAIL:INFO@GRANDSTONETYRE.COM

WEB:WWW.GRANDSTONETYRE.COM


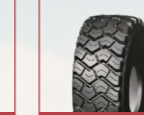
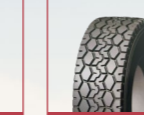

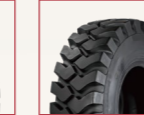

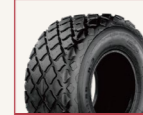
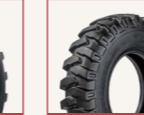
**SINCE 2001**

**GRANDSTONE**<sup>®</sup>  
DRIVING TOGETHER

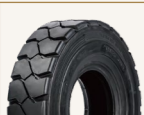


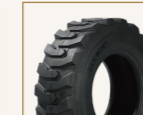
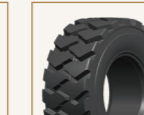
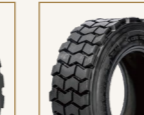
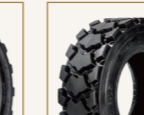
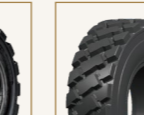
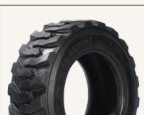
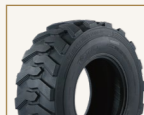
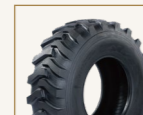
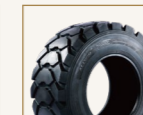
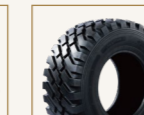
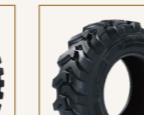
**QINGDAO  
GRANDSTONE  
TYRE CO., LTD**

OTR/INDUSTRIAL/AGR/TBB/FORESTRY TIRE

工程胎系列 OFF-THE-ROAD TIRE

 E-3/L-3 Page 08-09	 L-3NEW Page 10-11	 L-3NEW Page 12-13	 I-3I Page 14	 E-3/L-3 Page 15	 E-4/L-4 Page 16	 E-2 Page 17	 E-3 Page 18
 E-4 Page 19	 E-3/L-3 Page 20-21	 L-3NEW Page 22-23	 GS325 Page 24	 GS326 Page 25	 L-4 Page 26	 L-5 Page 27	 L-4S Page 28
 E-4 Page 29	 L-5S Page 30	 R-3 Page 31	 C-1 Page 32	 G-2/L-2 Page 33	 G-2/L-2 Page 34	 GS331 Page 35	

工业胎系列 INDUSTRIAL TIRE

 GS278 Page 38-39	 GS288 Page 40-41	 GS298 Page 42-43	 SKS-1 Page 44	 SKS-2 Page 45	 SKS-4 Page 46	 SKS-L5 Page 47	 SKS-5 Page 48
 G-2/L-2 Page 49	 G-2/L-2 Page 50	 R-4 Page 51	 R-4A Page 52	 R-4B Page 53	 R-4 Page 54-55		



轻卡载重系列 TRUCK AND BUS BIAS TIRE

 GS613 Page 116	 GS616 Page 117	 GS623 Page 118	 GS624 Page 119	 GS626 Page 120	 GS631 Page 121	 GS632 Page 122-123	 GS613 Page 124
 GS614 Page 125	 GS625 Page 126	 GS627 Page 127	 GS628 Page 128	 GS701 Page 129	 GS702 Page 130	 GS703 Page 131	 GS705 Page 132
 GS706 Page 133							


农业胎系列 AGRICULTURAL TIRE

 R-1 Page 58-61	 R-1A Page 62-63	 R-1B Page 64	 R-1C Page 65	 R-1D Page 66	 R-1S Page 67	 GS511 Page 68	 GS512 Page 69
 GS513 Page 70	 GS516 Page 71	 GS517 Page 72	 F-2M Page 73	 GS521 Page 74	 I-1 Page 75	 GS525 Page 76	 F-2 Page 77
 F-2B Page 78	 F-2C Page 79	 F-2D Page 80	 GS532 Page 81	 GS533 Page 82	 GS535 Page 83	 F-3B Page 84	 F-3C Page 85
 GS539 Page 86-87	 I-3C Page 88-89	 I-3D Page 90	 I-3E Page 91	 R-2 Page 92-93	 R-2C Page 94	 R-2 Page 95	 R-2 Page 96-97
 CR-1 Page 98-99	 PR-1 Page 100-101	 R-2 Page 102-103					

农子午系列 RADIAL AGRICULTURAL TIRE

 TR100/R-1W Page 106-107	 TR160/R-1W Page 108-109
---------------------------------------------------------------------------------------------------------------------	---------------------------------------------------------------------------------------------------------------------

林业胎系列 FORESTRY TIRE

 LS-2 Page 112-113
---------------------------------------------------------------------------------------------------------------





# E-3/L-3



## 适用场景 Applicable Operation Conditions

建筑、砂石筑路等作业  
Civil construction, Gravel road etc

## 产品介绍 Product Introductions

横向块状花纹, 宽行驶面设计, 具有良好的牵引性和耐磨损, 抗切割性能。

Horizontal block pattern, wide tread design, providing good traction and wear resistance, with cut resistance.

适用于钢厂等建筑工地使用, 耐切割性能好, 使用寿命长。

Suitable for use in steel mills, and construction sites, with good cut resistance and long service life.

## 适配车型 Compatible Models



装载机  
Wheel Loader



自卸车  
Dump Truck



铲运机  
Wheel Scraper

## 技术参数 Technical Specifications

规格 Tire Size	标准轮辋 Standard Rim	层级 Ply Rating	花纹深度 Tread Depth	断面宽 Section Width	外直径 Overall Diameter	最大负荷 Max. Load	标准气压 Pressure	行驶速度 Speed Index	有无内胎 TT/TL
			(mm)	(mm)	(mm)	(Kg)	(KPa)	km/h	
7.50-16	6.00G	8	20	215	810	1900	500	10	TT/TL
8.25-16	6.50H	10	20	235	865	1800	550	10	TT/TL
12.00-16	8.5	10	20	315	1020	1245	390	10/50	TT/TL
14/90-16	8.5H	10	16	215	896	1200	270	10/50	TT/TL
14.00-24	10.00/2.0	16	24	375	1370	7300/4000	550/375	10/50	TT/TL
14.00-24	10.00/2.0	20	24	375	1370	8500/4625	700/475	10/50	TT/TL
14.00-24	10.00/2.0	24	24	375	1370	9500/5150	850/575	10/50	TT/TL
14.00-24	10.00/2.0	28	24	375	1370	10000/5600	925/650	10/50	TT/TL
15.5-25	12.00/1.3	16	24	395	1275	6500/3750	525/325	10/50	TT/TL
16.00-24	11.25/2.0	16	26	430	1495	8250/4875	425/325	10/50	TT/TL
16.00-24	11.25/2.0	20	26	430	1495	9750/5450	550/400	10/50	TT/TL
16.00-25	11.25/2.0	28	28	430	1495	11500/6700	750/575	10/50	TT/TL
16.00-25	11.25/2.0	32	28	430	1495	12500/7300	875/650	10/50	TT/TL
16.00-25	11.25/2.0	36	28	430	1495	13600/7750	975/725	10/50	TT/TL
16/70-20	13(SDC)	14	25	410	1075	5150/2900	450/350	10/50	TT/TL
16/70-20	13(SDC)	18	25	410	1075	5800/3350	550/450	10/50	TT/TL
16/70-24	13(SDC)	14	25	410	1175	5600/3350	450/350	10/50	TT/TL
16/70-24	13(SDC)	18	25	410	1175	6300/3880	550/450	10/50	TT/TL
17.5-25	14.00/1.5	16	25	445	1350	7300/4250	475/300	10/50	TT/TL
17.5-25	14.00/1.5	20	25	445	1350	8250/5000	575/400	10/50	TT/TL
18.00-25	13.00/2.5	36	28	500	1615	16000/9250	850/625	10/50	TT/TL
18.00-25	13.00/2.5	40	28	500	1615	17000/9750	950/700	10/50	TT/TL
18.00-25	13.00/2.5	44	28	500	1615	18000/10300	1050/775	10/50	TT/TL
20.5-25	17.00/2.0	20	29	520	1490	9500/6000	450/325	10/50	TT/TL
20.5/70-16	10.00G	12	25	480	1070	2185/1890	300/250	10/50	TT/TL
23.5-25	19.50/2.5	20	31	595	1615	10900/7300	375/300	10/50	TT/TL
26.5-25	22.00/3.0	24	35	675	1750	14000/9250	400/300	10/50	TT/TL
29.5-25	25.00/3.5	28	36	750	1875	17500/11500	425/325	10/50	TT/TL



# L-3NEW

## 适用场景 Applicable Operation Conditions

建筑、砂石筑路等作业  
Civil construction, Gravel road etc

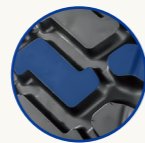
## 产品介绍 Product Introductions

大块的花纹设计具有良好的抓着力和非凡牵引力。

The large-pattern design offers excellent grip and extraordinary traction.

胎面柔性好,耐切割、耐抗刺,适合筑路、工地等复杂路面。

The tire tread has its good flexibility, resistance to cut and puncture, which is suitable for road maintenance or construction site operation.



## 适配车型 Compatible Models



装载机  
Wheel Loader



自卸车  
Dump Truck



铲运机  
Wheel Scraper

## 技术参数 Technical Specifications

规格 Tire Size	标准轮辋 Standard Rim	层级 Ply Rating	花纹深度 Tread Depth (mm)	断面宽 Section Width (mm)	外直径 Overall Diameter (mm)	最大负荷 Max. Load (Kg)	标准气压 Pressure (KPa)	行驶速度 Speed Index km/h	有无内胎 TT/TL
17.5-25	14.00/1.5	16	25	445	1350	7300/4250	475/300	10/50	TL/TT
17.5-25	14.00/1.5	20	25	445	1350	8250/5000	575/400	10/50	TL/TT
20.5-25	17.00/2.0	16	29	520	1490	8250/5450	350/275	10/50	TL/TT
20.5-25	17.00/2.0	20	29	520	1490	9500/6000	450/325	10/50	TL/TT
23.5-25	19.50/2.5	16	31	595	1615	9500/6150	300/225	10/50	TL/TT
23.5-25	19.50/2.5	20	31	595	1615	10900/7300	375/300	10/50	TL/TT



# L-3NEW

## 适配车型 Compatible Models



## 适用场景 Applicable Operation Conditions

建筑、砂石筑路等作业  
Civil construction, Gravel road etc

## 产品介绍 Product Introductions

大块的花纹设计具有良好的抓着力和非凡牵引力。

The large-pattern design offers excellent grip and extraordinary traction.

胎面柔性好，耐切割、耐抗刺，适合矿山、工地等复杂路面。

The tread has good flexibility, resistance to cut and puncture, which is suitable for complex surfaces such as mines and construction sites.

## 技术参数 Technical Specifications

规格 Tire Size	标准轮辋 Standard Rim	层级 Ply Rating	花纹深度 Tread Depth	断面宽 Section Width	外直径 Overall Diameter	最大负荷 Max. Load (Kg)	标准气压 Pressure (KPa)	行驶速度 Speed Index km/h	有无内胎 TT/TL
			(mm)	(mm)	(mm)				
16/70-20	13(SDC)	14	25	410	1075	5150/2900	450/350	10/50	TT/TL
16/70-20	13(SDC)	18	25	410	1075	5800/3350	550/450	10/50	TT/TL
20.5/70-16	10.00G	12	25	480	1070	2185/1890	300/250	10/50	TT/TL
26.5-25	22.00/3.0	24	35	675	1750	14000/9250	400/300	10/50	TT/TL



# I-3I

WHEEL LOADER TIRE

## 适用场景/Applicable Operation Conditions

装载作业  
Loading operations

## 产品介绍/Product Introductions

横向条状加深花纹,宽行驶面设计,具有良好的牵引性和耐磨损,抗切割性能。

Horizontal striped deep patterns, wide tread design, offering good traction and wear resistance, as well as cut resistance.

## 适配车型/Compatible Models



## 技术参数/Technical Specifications

规格 Tire Size	标准轮辋 Standard Rim	层级 Ply Rating	花纹深度 Tread Depth	断面宽 Section Width	外直径 Overall Diameter	最大负荷 Max. Load	标准气压 Pressure	行驶速度 Speed Index	有无内胎 TT/TL
			(mm)	(mm)	(mm)	(Kg)	(KPa)	km/h	
16/70-20	13(SDC)	14	46	410	1090	5150/2900	450/350	10/50	TT
16/70-20	13(SDC)	18	46	410	1090	5800/3350	550/450	10/50	TT
20.5/70-16	10.00G	14	45	356	955	1600	390	10	TT



# E-3/L-3

ALL-STEEL TIRE (WHEEL LOADER)

## 适用场景/Applicable Operation Conditions

装载作业  
Loading operations

## 产品介绍/Product Introductions

外形设计强壮,宽行驶面,接地面积大。

The design is robust with a wide tread surface and a large contact area.

增加轮胎冠部耐磨性能,减少胎侧割伤,低断面光面胎使用寿命长。

Enhanced wear resistance of the tire crown, reduced sidewall cuts, and longer service life for low-profile smooth tires.

## 适配车型/Compatible Models



## 技术参数/Technical Specifications

规格 Tire Size	标准轮辋 Standard Rim	层级 Ply Rating	花纹深度 Tread Depth	断面宽 Section Width	外直径 Overall Diameter	最大负荷 Max. Load (Kg)		标准气压 Pressure (KPa)		负荷指数 Load Index	有无内胎 TT/TL
			(mm)	(mm)	(mm)	50Km/h	10Km/h	50Km/h	10Km/h		
17.5R25	14.00/1.5	★★	28	445	1348	5450	8500	525	650	167B/182A2	TT/TL
20.5R25	17.00/2.0	★★	31	521	1493	7300	11500	525	650	177B/193A2	TT/TL
23.5R25	19.50/2.5	★★	34	597	1617	9250	14500	525	650	185B/201A2	TT/TL
26.5R25	22.00/3.0	★★	38	673	1750	11500	18500	525	650	193B/209A2	TL
29.5R25	25.00/3.5	★★	43	749	1874	14000	22400	525	650	200B/216A2	TL





# E-4/L-4

ALL-STEEL TIRE (WHEEL LOADER)

## 适用场景/Applicable Operation Conditions

装载作业  
Loading operations

## 产品介绍/Product Introductions

大轮廓设计提升轮胎承载能力。  
The large outline design enhances the tire's load-bearing capacity.

加深花纹设计提升轮胎使用寿命。  
The deep pattern design extends the tire's service life.

花块设计,提升轮胎耐切割性能。  
The tread block design improves the tire's cut resistance.

## 适配车型/Compatible Models



装载机  
Wheel Loader



铰链式卡车  
Articulated Truck



## 技术参数/Technical Specifications

规格 Tire Size	标准轮辋 Standard Rim	层级 Ply Rating	花纹深度 Tread Depth	断面宽 Section Width	外直径 Overall Diameter	最大负荷 Max. Load (Kg)		标准气压 Pressure (KPa)		负荷指数 Load Index	有无内胎 TT/TL
			(mm)	(mm)	(mm)	50Km/h	10Km/h	50Km/h	10Km/h		
26.5R25	22.00/3.0	★★	54	673	1750	11500	18500	525	650	193B/209A2	TL
29.5R25	25.00/3.5	★★	58	749	1874	14000	22400	525	650	200B/216A2	TL

# E-2

ALL-STEEL TIRE (WHEEL LOADER)

## 适用场景/Applicable Operation Conditions

矿用作业  
Mining operations

## 产品介绍/Product Introductions

大轮廓设计提升轮胎承载能力。  
The large outline design enhances the tire's load-bearing capacity.

加深花纹设计提升轮胎使用寿命。  
The deep pattern design extends the tire's service life.

花块设计,提升轮胎耐切割性能。  
The tread block design improves the tire's cut resistance.

## 适配车型/Compatible Models



矿用自卸车  
Dump Truck For Mining



## 技术参数/Technical Specifications

规格 Tire Size	标准轮辋 Standard Rim	层级 Ply Rating	花纹深度 Tread Depth	断面宽 Section Width	外直径 Overall Diameter	最大负荷 Max. Load (Kg)		标准气压 Pressure (KPa)		负荷指数 Load Index	有无内胎 TT/TL
			(mm)	(mm)	(mm)	50Km/h	10Km/h	50Km/h	10Km/h		
14.00R25 (385/95R25)	10.00/1.5	★★★	23	375	1368	6000	6000	900	900	170E/170F	TL

# E-3

## ALL-STEEL TIRE (WHEEL LOADER)

### 适用场景/Applicable Operation Conditions

矿用作业  
Mining operations

### 产品介绍/Product Introductions

大轮廓设计提升轮胎承载能力。  
The large outline design enhances the tire's load-bearing capacity.

加深花纹设计提升轮胎使用寿命。  
The deep pattern design extends the tire's service life.

花块设计,提升轮胎耐切割性能。  
The tread block design improves the tire's cut resistance.

### 适配车型/Compatible Models



矿用自卸车  
Dump Truck For Mining



### 技术参数/Technical Specifications

规格 Tire Size	标准轮辋 Standard Rim	层级 Ply Rating	花纹深度 Tread Depth	断面宽 Section Width	外直径 Overall Diameter	最大负荷 Max. Load (Kg)		标准气压 Pressure (kPa)		负荷指数 Load Index	有无内胎 TT/TL
			(mm)	(mm)	(mm)	50Km/h	10Km/h	50Km/h	10Km/h		
14.00R25 (385/95R25)	10.00/2.0	★★★	26	375	1368	6050	10000	800	1000	170B/188A2	TT

# E-4

## ALL-STEEL TIRE (WHEEL LOADER)

### 适用场景/Applicable Operation Conditions

矿用作业  
Mining operations

### 产品介绍/Product Introductions

大轮廓设计提升轮胎承载能力。  
The large outline design enhances the tire's load-bearing capacity.

加深花纹设计提升轮胎使用寿命。  
The deep pattern design extends the tire's service life.

花块设计,提升轮胎耐切割性能。  
The tread block design improves the tire's cut resistance.

### 适配车型/Compatible Models



矿用自卸车  
Dump Truck For Mining



### 技术参数/Technical Specifications

规格 Tire Size	标准轮辋 Standard Rim	层级 Ply Rating	花纹深度 Tread Depth	断面宽 Section Width	外直径 Overall Diameter	最大负荷 Max. Load (Kg)		标准气压 Pressure (kPa)		负荷指数 Load Index	有无内胎 TT/TL
			(mm)	(mm)	(mm)	50Km/h	10Km/h	50Km/h	10Km/h		
14.00R25 (385/95R25)	10.00/2.0	★★★	40	375	1368	6050	10000	800	1000	170B/188A2	TT



# E-3/L-3

## 适配车型 Compatible Models



## 适用场景 Applicable Operation Conditions

建筑、砂石筑路、矿山等作业  
Civil construction, Gravel road, mining operations etc

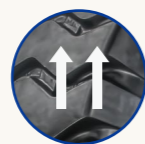
## 产品介绍 Product Introductions

横向块状花纹, 宽行驶面设计, 具有良好的牵引性和耐磨损, 抗切割性能。  
Horizontal block pattern, wide tread design, providing good traction and wear resistance, with cut resistance.

适用于矿山、钢厂等建筑工地使用, 耐切割性能好, 使用寿命长。  
Suitable for use in mines, steel mills, and construction sites, with good cut resistance and long service life.

## 技术参数 Technical Specifications

规格 Tire Size	标准轮辋 Standard Rim	层级 Ply Rating	花纹深度 Tread Depth	断面宽 Section Width	外直径 Overall Diameter	最大负荷 Max. Load	标准气压 Pressure	行驶速度 Speed Index	有无内胎 TT/TL
			(mm)	(mm)	(mm)	(Kg)	(KPa)	km/h	
17.5-25	14.00/1.5	24	25	445	1350	9250/5600	700/475	10/50	TT/TL
20.5-25	17.00/2.0	24	29	520	1490	10300/6700	525/400	10/50	TT/TL
23.5-25	19.50/2.5	24	31	595	1615	12500/8000	475/350	10/50	TT/TL
23.5-25	19.50/2.5	28	31	595	1615	13600/8750	550/400	10/50	TT/TL
26.5-25	22.00/3.0	28	35	675	1750	15500/10000	475/350	10/50	TT/TL
26.5-25	22.00/3.0	32	35	675	1750	17000/11200	550/425	10/50	TT/TL
29.5-25	25.00/3.5	32	36	750	1875	19250/13000	500/400	10/50	TT/TL





# L-3 NEW

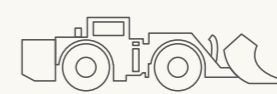
## 适配车型 Compatible Models



装载机  
Wheel Loader



自卸车  
Dump Truck



铲运机  
Wheel Scraper

## 技术参数 Technical Specifications

规格 Tire Size	标准轮辋 Standard Rim	层级 Ply Rating	花纹深度 Tread Depth	断面宽 Section Width	外直径 Overall Diameter	最大负荷 Max. Load	标准气压 Pressure	行驶速度 Speed Index	有无内胎 TT/TL
			(mm)	(mm)	(mm)	(Kg)	(KPa)	km/h	
17.5-25	14.00/1.5	24	25	445	1350	9250/5600	700/475	10/50	TT/TL
20.5-25	17.00/2.0	24	29	520	1490	10300/6700	525/400	10/50	TT/TL
23.5-25	19.50/2.5	24	31	595	1615	12500/8000	475/350	10/50	TT/TL
23.5-25	19.50/2.5	28	31	595	1615	13600/8750	550/400	10/50	TT/TL
26.5-25	22.00/3.0	28	35	675	1750	15500/10000	475/350	10/50	TT/TL
26.5-25	22.00/3.0	32	35	675	1750	17000/11200	550/425	10/50	TT/TL

## 适用场景 Applicable Operation Conditions

建筑、砂石筑路、矿山等作业  
Civil construction, Gravel road, mining operations etc

## 产品介绍 Product Introductions

大块的花纹设计具有良好的抓着力和非凡牵引力。

The large-pattern design offers excellent grip and extraordinary traction.

胎面柔性好，耐切割、耐抗刺，适合矿山、工地等复杂路面。

The tread has good flexibility, is resistant to cutting and punctures, and is suitable for complex surfaces such as mines and construction sites.



# GS325

MINING CATEGORY TIRE

## 适用场景/Applicable Operation Conditions

装载作业  
Loading operations

## 产品介绍/Product Introductions

加深的花纹设计具有良好的抓着力和非凡牵引力。  
The deepened pattern design offers excellent grip and extraordinary traction.

胎面柔性好,耐切割、耐抗刺,适合矿山、工地等复杂路面。  
The tread has good flexibility, with resistance to cut and puncture, making it suitable for complex terrains such as mines and construction sites.

## 适配车型/Compatible Models



## 技术参数/Technical Specifications

规格 Tire Size	标准轮辋 Standard Rim	层级 Ply Rating	花纹深度 Tread Depth (mm)	断面宽 Section Width (mm)	外直径 Overall Diameter (mm)	最大负荷 Max. Load (Kg)	标准气压 Pressure (KPa)	行驶速度 Speed Index km/h	有无内胎 TT/TL
14.00-20	14.00/1.5	18	21	375	1240	4000	600	50	TT



# GS326

MINING CATEGORY TIRE

## 适用场景/Applicable Operation Conditions

装载作业  
Loading operations

## 产品介绍/Product Introductions

大轮廓设计提升轮胎承载能力。  
The large outline design enhances the tire's load-bearing capacity.

加深花纹设计提升轮胎使用寿命。  
The deepened pattern design extends the tire's service life.

花块设计,提升轮胎耐切割性能。  
The tread block design improves the tire's cut resistance.

## 适配车型/Compatible Models



## 技术参数/Technical Specifications

规格 Tire Size	标准轮辋 Standard Rim	层级 Ply Rating	花纹深度 Tread Depth (mm)	断面宽 Section Width (mm)	外直径 Overall Diameter (mm)	最大负荷 Max. Load (Kg)	标准气压 Pressure (KPa)	行驶速度 Speed Index km/h	有无内胎 TT/TL
13.00-25	8.5	28	26	307	1297	4600	700	50	TT
12.00-20	8	20	29	310	1130	4670	790	50	TT



# L-4

MINING CATEGORY TIRE

## 适用场景/Applicable Operation Conditions

装载作业  
Loading operations

## 产品介绍/Product Introductions

加深的花纹设计具有良好的抓着力和非凡牵引力。  
The deepened pattern design offers excellent grip and extraordinary traction.

胎面柔性好, 耐切割、耐抗刺, 适合矿山、工地等复杂路面。  
The tread has good flexibility, with resistance to cut and puncture, making it suitable for complex terrains such as mines and construction sites.

## 适配车型/Compatible models



## 技术参数/Technical Specifications

规格 Tire Size	标准轮辋 Standard Rim	层级 Ply Rating	花纹深度 Tread Depth (mm)	断面宽 Section Width (mm)	外直径 Overall Diameter (mm)	最大负荷 Max. Load (Kg)	标准气压 Pressure (KPa)	行驶速度 Speed Index km/h	有无内胎 TT/TL
17.5-25	14.00/1.5	20	45	445	1400	8250/5000	575/400	10/50	TT/TL



# L-5

MINING CATEGORY TIRE

## 适用场景/Applicable Operation Conditions

装载作业  
Loading operations

## 产品介绍/Product Introductions

大轮廓设计提升轮胎承载能力。  
The large outline design enhances the tire's load-bearing capacity.

加深花纹设计提升轮胎使用寿命。  
The deepened pattern design extends the tire's service life.

花块设计, 提升轮胎耐切割性能。  
The tread block design improves the tire's cut resistance.

## 适配车型/Compatible models



## 技术参数/Technical Specifications

规格 Tire Size	标准轮辋 Standard Rim	层级 Ply Rating	花纹深度 Tread Depth (mm)	断面宽 Section Width (mm)	外直径 Overall Diameter (mm)	最大负荷 Max. Load (Kg)	标准气压 Pressure (KPa)	行驶速度 Speed Index km/h	有无内胎 TT/TL
20.5/70-16	10.00G	14	46	356	955	1600	350	10	TT
16/70-20	13(SDC)	16	50	410	1090	5480/3150	500/400	10/50	TT
17.5-25	14.00/1.5	20	60	445	1400	8250/5000	575/400	10/50	TL
17.5-25	14.00/1.5	24	60	445	1400	9250/5600	700/475	10/50	TL
20.5-25	17.00/2.0	20	66	520	1550	9500/6000	450/325	10/50	TL
20.5-25	17.00/2.0	24	66	520	1550	10300/6700	525/400	10/50	TL
20.5-25	17.00/2.0	28	66	520	1550	11500/7500	625/475	10/50	TL
23.5-25	19.50/2.5	24	72	595	1675	12500/8000	475/350	10/50	TL
23.5-25	19.50/2.5	28	72	595	1675	13600/8750	550/400	10/50	TL
23.5-25	19.50/2.5	40	72	595	1675	16900/10800	800/575	10/50	TL
26.5-25	22.00/3.0	32	82	675	1800	17000/11200	550/425	10/50	TL





# L-4S

UNDERGROUND MINE TIRE

## 适用场景/Applicable Operation Conditions

井下矿用  
Underground mining works

## 产品介绍/Product Introductions

外形设计强壮,宽行驶面,接地面积大。  
The design is robust with a wide tread surface and a large ground contact area.

增加轮胎冠部耐磨性能,减少胎侧割伤,低断面光面胎使用寿命长。  
Enhances the wear resistance of the tire crown, reduces sidewall cuts, and extends the its service life of low section smooth tires.

## 适配车型/Compatible models



井下铲运机  
Underground Mine Scraper



装载机  
Wheel Loader

## 技术参数/Technical Specifications

规格 Tire Size	标准轮辋 Standard Rim	层级 Ply Rating	花纹深度 Tread Depth	断面宽 Section Width	外直径 Overall Diameter	最大负荷 Max. Load	标准气压 Pressure	行驶速度 Speed Index	有无内胎 TT/TL
			(mm)	(mm)	(mm)	(Kg)	(KPa)	km/h	
10.00-20	7.5	18	32	278	1075	4600	750	10	TT

# E-4

UNDERGROUND MINE TIRE

## 适用场景/Applicable Operation Conditions

矿山短途运输作业  
Short-distance transportation operations in mining

## 产品介绍/Product Introductions

加深的花纹设计具有良好的抓着力和非凡牵引力。  
The deepened pattern design offers excellent grip and extraordinary traction.

大块花纹,耐切割、耐抗刺,适合矿山、工地等复杂路面。  
The tread has good flexibility, with resistance to cut and puncture, making it suitable for complex terrains such as mines and construction sites.

## 适配车型/Compatible models



矿用小卡车  
Mining Trucks



## 技术参数/Technical Specifications

规格 Tire Size	标准轮辋 Standard Rim	层级 Ply Rating	花纹深度 Tread Depth	断面宽 Section Width	外直径 Overall Diameter	最大负荷 Max. Load	标准气压 Pressure	行驶速度 Speed Index	有无内胎 TT/TL
			(mm)	(mm)	(mm)	(Kg)	(KPa)	km/h	
10.00-20	7.5	18	32	278	1075	3900	910	10	TT

# L-5S

UNDERGROUND MINE TIRE

## 适用场景/Applicable Operation Conditions

井下矿用  
underground mining works

## 产品介绍/Product Introductions

外形设计强壮, 宽行驶面, 接地面积大。  
The design is robust with a wide tread surface and a large contact area.

增加轮胎冠部耐磨性能, 减少胎侧割伤, 低断面光面胎使用寿命长。

Enhanced wear resistance of the tire crown, reduced sidewall cuts, and longer service life for low section smooth tires.

## 适配车型/Compatible models



井下铲运机  
Underground Mine Scraper

## 技术参数/Technical Specifications

规格 Tire Size	标准轮辋 Standard Rim	层级 Ply Rating	花纹深度 Tread Depth	断面宽 Section Width	外直径 Overall Diameter	最大负荷 Max. Load	标准气压 Pressure	行驶速度 Speed Index	有无内胎 TT/TL
			(mm)	(mm)	(mm)	(Kg)	(KPa)	km/h	
10.00-20	7.5	16	50	278	1055	5080/3215	790	10/50	TT
12.00-24	8.5	20	55	315	1275	6900/3750	825/550	10/50	TT
12.00-24	8.5	24	55	315	1275	7500/4125	975/650	10/50	TT
17.5-25	14.00/1.5	20	60	445	1400	8250/5000	575/400	10/50	TL



# R-3

ROAD ROLLER TIRE

## 适用场景/Applicable Operation Conditions

压平路作业  
Compaction works

## 产品介绍/Product Introductions

宽行驶面、具有高耐磨、抗刺扎。  
Wide driving surface, high wear resistance, puncture resistance.

## 适配车型/Compatible models



压平路机  
Road Roller

## 技术参数/Technical Specifications

规格 Tire Size	标准轮辋 Standard Rim	层级 Ply Rating	花纹深度 Tread Depth	断面宽 Section Width	外直径 Overall Diameter	最大负荷 Max. Load	标准气压 Pressure	行驶速度 Speed Index	有无内胎 TT/TL
			(mm)	(mm)	(mm)	(Kg)	(KPa)	km/h	
23.1-26	DW20	14	16	595	1500	5600	230	10	TT/TL
23.1-26	DW20	16	16	595	1500	6150	260	10	TT/TL



# C-1

ROAD ROLLER TIRE

## 适用场景/Applicable Operation Conditions

压平路作业  
Compaction works

## 产品介绍/Product Introductions

宽行驶面设计, 高牵引力, 高耐磨性能、高耐刺性能。  
Wide driving surface design, high traction, high wear resistance, and high puncture resistance.

## 适配车型/Compatible models



## 技术参数/Technical Specifications

规格 Tire Size	标准轮辋 Standard Rim	层级 Ply Rating	花纹深度 Tread Depth	断面宽 Section Width	外直径 Overall Diameter	最大负荷 Max. Load	标准气压 Pressure	行驶速度 Speed Index	有无内胎 TT/TL
			(mm)	(mm)	(mm)	(Kg)	(KPa)	km/h	
9.00-20	7.0	14	42	255	1015	4375	725	10	TT/TL
9.00-20	7.0	16	42	255	1015	4750	825	10	TT/TL



# G-2/L-2

ROAD ROLLER TIRE

## 适用场景/Applicable Operation Conditions

建筑、市政施工、土矿作业  
Civil construction, Municipal works, mining operations etc

## 产品介绍/Product Introductions

适合建筑、市政施工、土矿作业。  
Suitable for construction, municipal engineering, and earth mining operations.

具有优良的耐热性和耐磨性同时具备良好的牵引性能。  
It has excellent heat resistance and wear resistance, as well as good traction performance.

## 适配车型/Compatible models



## 技术参数/Technical Specifications

规格 Tire Size	标准轮辋 Standard Rim	层级 Ply Rating	花纹深度 Tread Depth	断面宽 Section Width	外直径 Overall Diameter	最大负荷 Max. Load	标准气压 Pressure	行驶速度 Speed Index	有无内胎 TT/TL
			(mm)	(mm)	(mm)	(Kg)	(KPa)	km/h	
13.00-24	8.00TG	12	23.5	335	1280	2725	300	10/40	TT/TL
13.00-24	8.00TG	16	23.5	335	1280	6500/3250	600/400	10/40	TT/TL
14.00-24	8.00TG	12	25	360	1350	3075	275	10/40	TT/TL
14.00-24	8.00TG	16	25	360	1350	7300/3650	550/375	10/40	TT/TL
15.5-25	12.00/1.3	16	24	395	1275	3130	300	40	TT/TL
17.5-25	14.00/1.5	16	24	445	1350	3350	275	40	TL



# G-2/L-2

ROAD ROLLER TIRE

## 适用场景/Applicable Operation Conditions

建筑、市政施工、土矿作业  
Civil construction, Municipal works, mining operations etc

## 产品介绍/Product Introductions

适合建筑、市政施工、土矿作业。  
Suitable for construction, municipal engineering, and earth mining operations.

具有优良的耐热性和耐磨性同时具备良好的牵引性能。  
It has excellent heat resistance and wear resistance, as well as good traction performance.

## 适配车型/Compatible models



## 技术参数/Technical Specifications

规格 Tire Size	标准轮辋 Standard Rim	层级 Ply Rating	花纹深度 Tread Depth (mm)	断面宽 Section Width (mm)	外直径 Overall Diameter (mm)	最大负荷 Max. Load (Kg)	标准气压 Pressure (KPa)	行驶速度 Speed Index km/h	有无内胎 TT/TL
13.00-24	8.00TG	14	22	335	1280	6150/3000	525/350	10/40	TL/TT
13.00-24	8.00TG	16	22	335	1280	6500/3250	600/400	10/40	TL/TT
14.00-24	8.00TG	14	24	360	1350	6900/3450	500/325	10/40	TL/TT
14.00-24	8.00TG	16	24	360	1350	7300/3650	550/375	10/40	TL/TT



# GS331

WHEEL EXCAVATOR TIRE

## 适用场景/Applicable Operation Conditions

挖掘作业  
Excavation works

## 产品介绍/Product Introductions

宽行驶面特殊牵引型花纹、牵引性强、花纹沟底倒弧大解决沟底裂口问题。  
The special traction pattern with a wide tread surface has strong traction and a large downward curve at the bottom of the grooves, addressing the issue of groove bottom cracking.

花纹块提升轮胎耐磨性能、使用寿命。  
The pattern blocks enhance the tire's wear resistance and extend its service life.

## 适配车型/Compatible models



## 技术参数/Technical Specifications

规格 Tire Size	标准轮辋 Standard Rim	层级 Ply Rating	花纹深度 Tread Depth (mm)	断面宽 Section Width (mm)	外直径 Overall Diameter (mm)	最大负荷 Max. Load (Kg)	标准气压 Pressure (KPa)	行驶速度 Speed Index km/h	有无内胎 TT/TL
9.00-20	7.0	16	19	259	1018	4725	860	10	TT
10.00-20	7.5	16	19	278	1055	5090	790	10	TT





**适配车型** Compatible Models



工业叉车  
Industrial Forklift

**技术参数** Technical Specifications

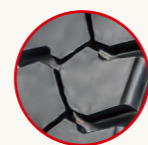
规格 Tire Size	标准轮辋 Standard Rim	层级 Ply Rating	花纹深度 Tread Depth (mm)	断面宽 Section Width (mm)	外直径 Overall Diameter (mm)	最大负荷 Max. Load (Kg)	标准气压 Pressure (KPa)	行驶速度 Speed Index km/h	有无内胎 TT/TL
5.00-8	3.50D	8	10	137	470	1000	790	25	TT
5.00-8	3.50D	10	10	137	470	1150	1000	25	TT
6.00-9	4.00E	10	11.5	160	540	1505	860	25	TT
6.00-9	4.00E	12	11.5	160	540	1675	1030	25	TT
7.00-9	5.00S	10	13	190	590	1505	860	25	TT
6.50-10	5.00F	10	13.5	175	590	1655	790	25	TT
6.50-10	5.00F	12	13.5	175	590	1895	1000	25	TT
7.00-12	5.00S	12	15	190	676	2375	860	25	TT
7.00-12	5.00S	14	15	190	676	2590	1000	25	TT
8.25-12	6.5	14	15	235	765	3325	830	25	TT
7.00-15	5.5	12	15	200	750	2870	860	25	TT
7.00-15	5.5	14	15	200	750	3140	1000	25	TT
7.50-15	6.0	12	15	215	780	3075	790	25	TT
7.50-15	6.0	14	15	215	780	3375	925	25	TT
28X9-15	7.0	14	17	220	706	3050	970	25	TT
28X9-15	7.0	16	17	220	706	3115	1000	25	TT
8.25-15	6.5	14	17	235	840	3775	830	25	TT
8.25-15	6.5	16	17	235	840	4050	925	25	TT

**GS278**

**适用场景** Applicable Operation Conditions

园区铲运作业  
Park shoveling operations

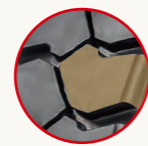
**产品介绍** Product Introductions



花纹块粗犷厚实，花纹深，使用周期长。  
The patterns are rugged and thick, with deep designs, ensuring a long usage cycle.



具有良好的耐磨性、耐切割性和耐抗刺扎性能。  
It has good wear resistance, cut resistance, and puncture resistance.



加强的胎圈设计在重载或急转弯情况下，保证良好操纵性和驾驶安全性。  
The reinforced bead design ensures good handling and driving safety under heavy loads or sharp turns.





# GS288

## 适用场景 Applicable Operation Conditions

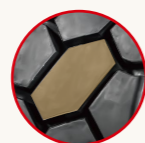
园区铲运作业  
Park shoveling operations

## 产品介绍 Product Introductions

超宽行驶面, 花纹块粗犷厚实, 耐用好。  
The patterns are rugged and thick, with deep designs, ensuring a long usage cycle.



良好的耐磨性、耐切割性和耐抗刺扎性能。  
It has good wear resistance, cut resistance, and puncture resistance.



加强的胎圈设计在重载或急转弯情况下, 保证良好操纵性和驾驶安全性。  
The reinforced bead design ensures good handling and driving safety under heavy loads or sharp turns.



## 适配车型 Compatible Models



工业叉车  
Industrial Forklift

## 技术参数 Technical Specifications

规格 Tire Size	标准轮辋 Standard Rim	层级 Ply Rating	花纹深度 Tread Depth (mm)	断面宽 Section Width (mm)	外直径 Overall Diameter (mm)	最大负荷 Max. Load (Kg)	标准气压 Pressure (KPa)	行驶速度 Speed Index km/h	有无内胎 TT/TL
10.00-20	7.5	16	30	278	1055	6030	790	25	TT
12.00-20	8.5	20	32	315	1125	7400	1000	25	TT



# GS298

## 适用场景 Applicable Operation Conditions

园区铲运作业  
Park shoveling operations

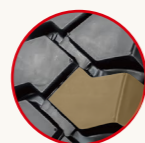
## 产品介绍 Product Introductions



花纹块粗犷厚实, 花纹深, 抓地力好, 使用寿命长。  
The tire tread is rugged and thick, with deeper patterns, excellent grip, and a long service life.



优异的耐磨性、耐切割性和耐抗刺扎性能。  
It has good wear resistance, cut resistance, and puncture resistance.



加强的胎圈设计在重载或急转弯情况下, 保证良好操纵性和驾驶安全性。

The reinforced bead design ensures good handling and driving safety under heavy loads or sharp turns.



## 适配车型 Compatible Models



工业叉车  
Industrial Forklift

## 技术参数 Technical Specifications

规格 Tire Size	标准轮辋 Standard Rim	层级 Ply Rating	花纹深度 Tread Depth	断面宽 Section Width	外直径 Overall Diameter	最大负荷 Max. Load	标准气压 Pressure	行驶速度 Speed Index	有无内胎 TT/TL
			(mm)	(mm)	(mm)	(Kg)	(KPa)	km/h	
5.00-8	3.50	10	10	137	470	1150	1000	25	TT
6.00-9	4.00	10	11.5	160	540	1505	860	25	TT
6.50-10	5.00	10	13.5	175	590	1655	790	25	TT
7.00-9	4.33	10	13	190	590	1995	860	25	TT
7.00-12	5.00S	12	15	190	676	2375	860	25	TT
7.50-15	6.0	12	15	215	780	3075	790	25	TT
8.25-12	6.5	12	15	235	765	3060	720	25	TT
18×7-8	4.33	14	14	168	465	1440	970	25	TT
21×8-9	6.00	14	14	200	535	2040	1000	25	TT
23×9-10	6.50	18	14	225	595	3160	1050	25	TT
25-15	7.5	16	19	250	735	3865	930	25	TT
300-15	8.0	18	21	300	840	5530	830	25	TT



# SKS-1

SKID STEERLOADERS TIRE

## 适用场景/Applicable Operation Conditions

工业装载作业  
Loading operations

## 产品介绍/Product Introductions

宽行驶面, 高饱和牵引型花纹, 车辆行驶平稳。  
Wide tread surface, high-saturation traction pattern, smooth vehicle operation.

加深的花纹, 耐磨性能好, 使用周期长。  
The deepened pattern offers excellent wear resistance and a long service life.

## 适配车型/Compatible Models



滑移装载机  
Skid Steer Loader



## 技术参数/Technical Specifications

规格 Tire Size	标准轮辋 Standard Rim	层级 Ply Rating	花纹深度 Tread Depth (mm)	断面宽 Section Width (mm)	外直径 Overall Diameter (mm)	最大负荷 Max. Load (Kg)	标准气压 Pressure (KPa)	行驶速度 Speed Index km/h	有无内胎 TT/TL
11L-16	8LB	12	16	280	835	1395	420	10	TL
10-16.5	8.25	10	21	264	773	2135	520	10	TL
10-16.5	8.25	12	21	264	773	2375	620	10	TL

# SKS-2

SKID STEERLOADERS TIRE

## 适用场景/Applicable Operation Conditions

工业装载作业  
Loading operations

## 产品介绍/Product Introductions

宽行驶面, 高饱和牵引型花纹, 车辆行驶平稳。  
Wide tread surface, high-saturation traction pattern, smooth vehicle operation.

加深的花纹, 耐磨性能好, 使用周期长。  
The deepened pattern offers excellent wear resistance and a long service life.

## 适配车型/Compatible Models



滑移装载机  
Skid Steer Loader



## 技术参数/Technical Specifications

规格 Tire Size	标准轮辋 Standard Rim	层级 Ply Rating	花纹深度 Tread Depth (mm)	断面宽 Section Width (mm)	外直径 Overall Diameter (mm)	最大负荷 Max. Load (Kg)	标准气压 Pressure (KPa)	行驶速度 Speed Index km/h	有无内胎 TT/TL
10-16.5	8.25	12	25	264	773	2375	620	10	TL
12-16.5	9.75	12	33	307	831	2865	550	10	TL



# SKS-4

SKID STEERLOADERS TIRE

## 适用场景/Applicable Operation Conditions

工业装载作业  
Loading operations

## 产品介绍/Product Introductions

大块的花纹设计可以提供良好的稳定性和较强的耐穿刺性。  
The large patterned design provides good stability and strong puncture resistance.

加深的花纹, 耐磨性能好, 使用周期长。  
The deepened pattern offers excellent wear resistance and a long service life.

## 适配车型/Compatible Models



滑移装载机  
Skid Steer Loader



## 技术参数/Technical Specifications

规格 Tire Size	标准轮辋 Standard Rim	层级 Ply Rating	花纹深度 Tread Depth	断面宽 Section Width	外直径 Overall Diameter	最大负荷 Max. Load	标准气压 Pressure	行驶速度 Speed Index	有无内胎 TT/TL
			(mm)	(mm)	(mm)	(Kg)	(KPa)	km/h	
10-16.5	8.25	10	26	264	773	2135	520	10	TL
10-16.5	8.25	12	26	264	773	2375	620	10	TL
12-16.5	9.75	10	27	307	831	2540	450	10	TL
12-16.5	9.75	12	27	307	831	2865	550	10	TL

# SKS-L5

SKID STEERLOADERS TIRE

## 适用场景/Applicable Operation Conditions

工业装载作业  
Loading operations

## 产品介绍/Product Introductions

花纹满足越野和平整路况使用。  
The tread pattern is suitable for both off-road and smooth road conditions.

具有良好的耐磨性, 散热性, 耐切割和耐刺扎性能。宽行驶面提升平整路面行驶舒适性。  
It has good wear resistance, heat dissipation, cut resistance, and puncture resistance. The wide tread improves driving comfort on smooth surfaces.

## 适配车型/Compatible Models



滑移装载机  
Skid Steer Loader



## 技术参数/Technical Specifications

规格 Tire Size	标准轮辋 standard Rim	层级 Ply Rating	花纹深度 Tread Depth	断面宽 Section Width	外直径 Overall Diameter	最大负荷 Max. Load	标准气压 Pressure	行驶速度 Speed Index	有无内胎 TT/TL
			(mm)	(mm)	(mm)	(Kg)	(KPa)	km/h	
10-16.5	8.25	10	33	264	773	2135	520	10	TL
10-16.5	8.25	12	33	264	773	2375	620	10	TL
12-16.5	9.75	10	34	307	831	2540	450	10	TL
12-16.5	9.75	12	34	307	831	2865	550	10	TL

# SKS-5

SKID STEERLOADERS TIRE

## 适用场景/Applicable Operation Conditions

工业装载作业  
Loading operations

## 产品介绍/Product Introductions

大块的花纹设计可以提供良好的稳定性和较强的耐穿刺性。  
The large patterned design provides good stability and strong puncture resistance.

加深的花纹, 耐磨性能好, 使用周期长。  
The deepened pattern offers excellent wear resistance and a long service life.

## 适配车型/Compatible Models



滑移装载机  
Skid Steer Loader



## 技术参数/Technical Specifications

规格 Tire Size	标准轮辋 Standard Rim	层级 Ply Rating	花纹深度 Tread Depth	断面宽 Section Width	外直径 Overall Diameter	最大负荷 Max. Load	标准气压 Pressure	行驶速度 Speed Index	有无内胎 TT/TL
			(mm)	(mm)	(mm)	(Kg)	(KPa)	km/h	
10-16.5	8.25	12	32	264	773	2375	620	10	TL
12-16.5	9.75	12	36	307	831	2865	550	10	TL
12.5/80-18	9.00	12	35	308	965	2625	370	10	TL



# G-2/L-2

SKID STEERLOADERS TIRE

## 适用场景/Applicable Operation Conditions

工业装载作业  
Loading operations

## 产品介绍/Product Introductions

宽行驶面, 高饱和牵引型花纹, 车辆行驶平稳。  
Wide tread surface, high-saturation traction pattern, smooth vehicle operation.

具有高耐磨、抗切割、抗刺扎性能, 加深花纹具有更强的性价比。  
It has good wear resistance, cut resistance, and puncture resistance.

## 适配车型/Compatible Models



滑移装载机  
Skid Steer Loader



两头忙  
Backhoe



## 技术参数/Technical Specifications

规格 Tire Size	标准轮辋 Standard Rim	层级 Ply Rating	花纹深度 Tread Depth	断面宽 Section Width	外直径 Overall Diameter	最大负荷 Max. Load	标准气压 Pressure	行驶速度 Speed Index	有无内胎 TT/TL
			(mm)	(mm)	(mm)	(Kg)	(KPa)	km/h	
10-16.5	8.25	10	21	264	773	2135	520	10	TL
10-16.5	8.25	12	21	264	773	2375	620	10	TL
12-16.5	9.75	10	21	307	831	2540	450	10	TL
12-16.5	9.75	12	21	307	831	2865	550	10	TL
14-17.5	10.50	14	22	349	921	3875	550	10	TL
15-19.5	11.75	14	22	389	1019	4565	485	10	TL



# G-2/L-2

SKID STEER LOADERS TIRE

## 适用场景/Applicable Operation Conditions

工业装载作业  
Loading operations

## 产品介绍/Product Introductions

宽行驶面, 高饱和牵引型花纹, 车辆行驶平稳。  
Wide tread surface, high-saturation traction pattern, smooth vehicle operation.

具有高耐磨、抗切割、抗刺扎性能, 加深花纹具有更强的性价比。  
It has good wear resistance, cut resistance, and puncture resistance.

## 适配车型/Compatible Models



滑移装载机  
Skid Steer Loader



两头忙  
Backhoe

## 技术参数/Technical Specifications

规格 Tire Size	标准轮辋 Standard Rim	层级 Ply Rating	花纹深度 Tread Depth (mm)	断面宽 Section Width (mm)	外直径 Overall Diameter (mm)	最大负荷 Max. Load (Kg)	标准气压 Pressure (KPa)	行驶速度 Speed Index km/h	有无内胎 TT/TL
14-17.5	10.50	14	19	349	921	3875	550	10	



# R-4

INDUSTRIAL VEHICLE TIRE

## 适用场景/Applicable Operation Conditions

建筑、市政施工、土矿作业  
Civil construction, Municipal works, mining operations etc

## 产品介绍/Product Introductions

适用于小型挖掘机, 具有良好的牵引性能和防滑性能。  
Suitable for small excavators, with good traction and anti-skid performance.

适用于建筑, 市政施工土矿等环境。  
Applicable to conditions such as construction, municipal engineering, and earth mining.

## 适配车型/Compatible Models



小挖掘机  
Mini-Wheel Excavator

## 技术参数/Technical Specifications

规格 Tire Size	标准轮辋 Standard Rim	层级 Ply Rating	花纹深度 Tread Depth (mm)	断面宽 Section Width (mm)	外直径 Overall Diameter (mm)	最大负荷 Max. Load (Kg)	标准气压 Pressure (KPa)	行驶速度 Speed Index km/h	有无内胎 TT/TL
16.9-24	W15L	12	25	430	1335	3250	260	30	TL
16.9-28	W15L	12	25	430	1435	3550	260	30	TL
17.5L-24	W15L	12	25	445	1265	2995	250	30	TL
18.4-26	DW16	12	25	467	1450	4000	250	30	TL
19.5L-24	DW16	12	26	495	1340	3455	230	30	TL
19.5L-24	DW16	16	26	495	1340	4035	300	30	TL
21L-24	DW18	12	27	533	1400	3875	220	30	TL





# R-4A

INDUSTRIAL VEHICLE TIRE

## 适用场景/Applicable Operation Conditions

市政土矿、筑路等挖掘作业  
Civil construction, Municipal works, mining operations etc

## 产品介绍/Product Introductions

适用于建筑土矿等环境，超宽行驶面具有良好的牵引性能和防滑性能。

Suitable for environments such as construction sites and earthworks, the ultra-wide tread offers excellent traction and anti-skid performance.

## 适配车型/Compatible Models



小挖掘机  
Mini-Wheel Excavator



## 技术参数/Technical Specifications

规格 Tire Size	标准轮辋 Standard Rim	层级 Ply Rating	花纹深度 Tread Depth	断面宽 Section Width	外直径 Overall Diameter	最大负荷 Max. Load (Kg)	标准气压 Pressure (KPa)	行驶速度 Speed Index km/h	有无内胎 TT/TL
			(mm)	(mm)	(mm)				
12.5/80-18	9.00	12	35	308	965	2625	370	10	TL
19.5L-24	DW16	12	26	495	1340	3455	230	30	TL

# R-4B

INDUSTRIAL VEHICLE TIRE

## 适用场景/Applicable Operation Conditions

市政土矿、筑路等挖掘作业  
Civil construction, Municipal works, mining operations etc

## 产品介绍/Product Introductions

具有超宽行驶面具有良好的牵引性能和防滑性能。  
The ultra-wide tread provides excellent traction and anti-skid performance.

具有良好的自洁和通过性能。  
It has good self-cleaning and passability performance.

## 适配车型/Compatible Models



小挖掘机  
Mini-Wheel Excavator



## 技术参数/Technical Specifications

规格 Tire Size	标准轮辋 Standard Rim	层级 Ply Rating	花纹深度 Tread Depth	断面宽 Section Width	外直径 Overall Diameter	最大负荷 Max. Load (Kg)	标准气压 Pressure (KPa)	行驶速度 Speed Index km/h	有无内胎 TT/TL
			(mm)	(mm)	(mm)				
19.5L-24	DW16	16	26	495	1340	4035	300	30	TL



# R-4

## 适用场景 Applicable Operation Conditions

建筑、市政施工、土矿作业  
Civil construction, Municipal works, mining operations etc

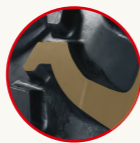
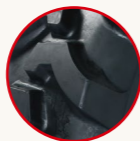
## 产品介绍 Product Introductions

适用于小型挖掘机，具有良好的牵引性能和防滑性能。

Suitable for small excavators and other machinery, with good traction and anti-skid performance.

适用于建筑，市政施工土矿等环境。

Applicable to conditions such as construction, municipal engineering, and earth mining.



## 适配车型 Compatible Models



小挖掘机  
Mini-Wheel Excavator



两头忙  
Backhoe

## 技术参数 Technical Specifications

规格 Tire Size	标准轮辋 Standard Rim	层级 Ply Rating	花纹深度 Tread Depth (mm)	断面宽 Section Width (mm)	外直径 Overall Diameter (mm)	最大负荷 Max. Load (Kg)	标准气压 Pressure (KPa)	行驶速度 Speed Index km/h	有无内胎 TT/TL
10.5/80-18	9.00	12	22	274	885	2140	440	30	TL
12.5/80-18	9.00	12	22.5	308	965	2625	370	30	TL



# R-1



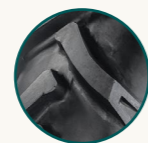
## 适用场景 Applicable Operation Conditions

农田作业兼短途运输  
Farmland operations and short-distance transportation

## 产品介绍 Product Introductions

适用于拖拉机驱动轮使用，具有良好的牵引性、耐磨性和自洁性能。

Suitable for use on tractor drive wheels, with good traction, wear resistance, and self-cleaning performance.



适合旱田作业并兼顾短途运输。  
Suitable for dry land operations and short-distance transportation.



具有良好的耐天候老化性能。  
Excellent resistance to weathering & ageing performance.

## 适配车型 Compatible Models



拖拉机  
Tractor



联合收割机  
Combine Harvester



农机具  
Farm Machinery

## 技术参数 Technical Specifications

规格 Tire Size	标准轮辋 Standard Rim	层级 Ply Rating	花纹深度 Tread Depth	断面宽 Section Width	外直径 Overall Diameter	最大负荷 Max. Load	标准气压 Pressure	行驶速度 Speed Index	有无内胎 TT/TL
			(mm)	(mm)	(mm)	(Kg)	(KPa)	km/h	
4.00-8	3.00D	6	13	110	425	260	360	30	TT
5.00-12	4.00E	6	15	145	590	310	240	30	TT
5.50-13	4.00E	8	15	145	610	280	345	30	TT
5.50-17	4.00E	8	18	150	730	700	420	30	TT
6.00-12	4.50E	8	20	165	640	520	330	30	TT
6.00-16	4.50E	8	19	165	745	550	360	30	TT
7.50-16	5.50F	8	21	205	810	770	280	30	TT
7.50-20	5.50F	8	21	205	910	915	280	30	TT
8.3-20	W7	8	24	210	895	850	310	30	TT
8.3-24	W7	8	24	210	995	830	250	30	TT
9.5-20	W8	8	25	240	950	955	280	30	TT
9.5-24	W8	8	25	240	1050	1110	280	30	TT
9.5-24	W8	10	25	240	1050	1265	350	30	TT
10.0/75-15.3	9.00	10	26	264	760	1525	390	30	TT
11.2-24	W10	8	26	285	1105	1225	240	30	TT
11.2-24	W10	10	26	285	1105	1380	300	30	TT
11.2-24	W10	12	26	285	1105	1535	360	30	TT
11.2-28	W10	10	28	285	1205	1515	310	30	TT
11.2-38	W10	10	28	285	1465	1440	280	30	TT
11.2-38	W10	12	28	285	1465	1780	340	30	TT
11-32	W10	10	28	305	1360	1460	250	30	TT
12-38	DW11	10	35	330	1575	1800	220	30	TT
12.4-24	W11	10	29	315	1160	1640	290	30	TT
12.4-24	W11	12	29	315	1160	1775	330	30	TT
12.4-28	W11	8	29	315	1260	1510	230	30	TT
12.4-28	W11	10	29	315	1260	1700	280	30	TT
12.4-28	W11	12	29	315	1260	1900	340	30	TT
13.6-24	W12	10	30	345	1210	1790	250	30	TT
13.6-24	W12	12	30	345	1210	2220	360	30	TT
13.6-28	W12	10	31	345	1310	1910	250	30	TT
13.6-28	W12	12	31	345	1310	2130	300	30	TT
13.6-38	W12	10	34	345	1565	2215	250	30	TT
13.6-38	W12	12	34	345	1565	2415	290	30	TT

规格 Tire Size	标准轮辋 Standard Rim	层级 Ply Rating	花纹深度 Tread Depth	断面宽 Section Width	外直径 Overall Diameter	最大负荷 Max. Load	标准气压 Pressure	行驶速度 Speed Index	有无内胎 TT/TL
			(mm)	(mm)	(mm)	(Kg)	(KPa)	km/h	
14.9-24	W13	10	22	378	1265	1990	230	30	TT
14.9-24	W13	12	22	378	1265	2380	300	30	TT
14.9-24	W13	16	22	378	1265	3010	465	30	TT
14.9-26	W13	10	32	378	1315	2055	230	30	TT
14.9-26	W13	12	32	378	1315	2360	280	30	TT
14.9-28	W13	10	34	378	1365	2120	230	30	TT
14.9-28	W13	12	34	378	1365	2400	280	30	TT
14.9-30	W13	10	32	378	1415	2190	230	30	TT
15.5/80-24	W13	10	35	394	1262	2650	250	30	TL/TT
15.5-38	W14L	10	35	395	1570	2320	230	30	TT
15.5-38	W14L	12	35	395	1570	2600	280	30	TT
15-24	W14	10	32	410	1330	2800	280	30	TT
15-24	W14	12	32	410	1330	3100	330	30	TT
16.9-24	W15L	10	33	430	1335	2230	200	30	TT
16.9-24	W15L	12	33	430	1335	2420	230	30	TT
16.9-28	W15L	10	35	430	1435	2380	200	30	TT
16.9-28	W15L	12	35	430	1435	2650	240	30	TT
16.9-28	W15L	16	35	430	1435	3135	320	30	TT
16.9-30	W15L	10	36	430	1485	2455	200	30	TT
16.9-30	W15L	12	36	430	1485	2730	240	30	TT

规格 Tire Size	标准轮辋 Standard Rim	层级 Ply Rating	花纹深度 Tread Depth	断面宽 Section Width	外直径 Overall Diameter	最大负荷 Max. Load	标准气压 Pressure	行驶速度 Speed Index	有无内胎 TT/TL
			(mm)	(mm)	(mm)	(Kg)	(KPa)	km/h	
16.9-30	W15L	16	36	430	1485	3230	320	30	TT
16.9-34	W15L	10	36	430	1585	2605	200	30	TT
16.9-34	W15L	12	36	430	1585	2900	240	30	TT
16.9-38	W15L	16	36	430	1685	2760	200	30	TT
18.4-26	DW16	10	35	467	1450	2645	180	30	TT
18.4-26	DW16	16	35	467	1450	3280	260	30	TT
18.4-30	W16L	10	36	467	1550	2815	180	30	TT
18.4-30	W16L	12	36	467	1550	3180	230	30	TT
18.4-34	W16L	10	36	467	1655	2990	180	30	TT
18.4-34	W16L	12	36	467	1655	3375	230	30	TT
18.4-34	W16L	14	36	467	1655	3630	260	30	TT
18.4-38	W16L	10	37	467	1755	3160	180	30	TT
18.4-38	W16L	12	37	467	1755	3575	230	30	TT
18.4-38	W16L	14	37	467	1755	4010	280	30	TT
18.4-42	W16	10	35	467	1857	3330	180	30	TT
18.4-42	W16	12	35	467	1857	3750	210	30	TT
20.8-38	W18L	10	38	528	1835	3475	160	30	TT
20.8-38	W18L	12	38	528	1835	4000	200	30	TT
20.8-38	W18L	14	38	528	1835	4450	240	30	TT
16/70-20	14	12	32	406	1075	3288	290	30	TT





# R-1A

## 适用场景 **Applicable Operation Conditions**

农田作业兼短途运输  
Farmland operations and short-distance transportation

## 产品介绍 **Product Introductions**

大角度花纹设计, 抓着力好, 具有高通过性和自洁性能。  
Large-angle pattern design, good gripping ability, high passability, and self-cleaning performance.

适合旱田作业并兼顾短途运输。  
Suitable for dry field operations and short-distance transportation.

具有良好的耐天候老化性能。  
Excellent resistance to weathering & ageing performance.



## 适配车型 **Compatible Models**



拖拉机  
Tractor

## 技术参数 **Technical Specifications**

规格 Tire Size	标准轮辋 Standard Rim	层级 Ply Rating	花纹深度 Tread Depth (mm)	断面宽 Section Width (mm)	外直径 Overall Diameter (mm)	最大负荷 Max. Load (Kg)	标准气压 Pressure (KPa)	行驶速度 Speed Index km/h	有无内胎 TT/TL
6.00-12	4.50E	8	27	165	640	520	330	30	TT
6.00-14	4.50E	8	30	165	690	530	330	30	TT
6.00-16	4.50E	8	26	165	745	550	360	30	TT
6.50-16	5.00F	10	30	180	765	680	330	30	TT
7.00-12	5.00F	8	30	190	680	500	300	30	TT
7.50-16	5.50F	8	30	205	810	770	280	30	TT
8.3-20	W7	8	38	210	895	850	310	30	TT
8.3-24	W7	8	36	210	995	830	250	30	TT
9.5-16	W8	8	30	240	850	900	260	30	TT
9.5-20	W8	10	39	240	950	1090	350	30	TT
9.5-24	W8	10	25	240	1050	1265	350	30	TT
9.5-32	W8	10	38	240	1250	1380	330	30	TT
9.5-38	W8	10	38	240	1400	1500	320	30	TT
11.2-24	W10	10	40	285	1105	1380	300	30	TT
11.2-28	W10	8	45	285	1205	1305	240	30	TT
11-32	W10	10	42	305	1360	1460	250	30	TT
12.4-28	W11	10	45	315	1260	1700	280	30	TT
13.6-16	W12	10	38	345	1000	1180	180	30	TT

# R-1B

T R A C T O R T I R E ( D R Y L A N D )

## 适用场景/Applicable Operation Conditions

农田作业兼短途运输  
 Farmland operations and short-distance transportation

## 产品介绍/Product Introductions

大小花纹的设计具有极佳的牵引性、耐磨性和自洁性能。

The design of large and small patterns offers excellent traction, wear resistance, and self-cleaning performance.

适合旱田作业并兼顾短途运输。  
 Suitable for dry field operations and short-distance transportation.

具有良好的耐老化性能。  
 Excellent resistance to weathering & ageing performance.

## 适配车型/Compatible Models



## 技术参数/Technical Specifications

规格 Tire Size	标准轮辋 Standard Rim	层级 Ply Rating	花纹深度 Tread Depth	断面宽 Section Width	外直径 Overall Diameter	最大负荷 Max. Load	标准气压 Pressure	行驶速度 Speed Index	有无内胎 TT/TL
			(mm)	(mm)	(mm)	(Kg)	(KPa)	km/h	
11-38	W10	10	35	305	1540	1830	220	30	TT
15.5-38	W14L	10	35	395	1570	2320	230	30	TT
16.9-30	W15L	10	36	430	1485	2455	200	30	TT
18.4-30	W16L	10	36	467	1550	2815	180	30	TT
18.4-34	W16L	10	36	467	1655	2990	180	30	TT
18.4-38	W16L	10	37	467	1755	3160	180	30	TT



# R-1C

T R A C T O R T I R E ( D R Y L A N D )

## 适用场景/Applicable Operation Conditions

农田作业兼短途运输  
 Farmland operations and short-distance transportation

## 产品介绍/Product Introductions

粗壮的花纹块设计，具有极佳的牵引性、耐磨性和自洁性能。

Sturdy patterned block design, featuring excellent traction, wear resistance, and self-cleaning performance.

适合旱田作业并兼顾短途运输。  
 Suitable for dry field operations and short-distance transportation.

具有良好的耐老化性能。  
 Excellent resistance to weathering & ageing performance.

## 适配车型/Compatible Models



## 技术参数/Technical Specifications

规格 Tire Size	标准轮辋 Standard Rim	层级 Ply Rating	花纹深度 Tread Depth	断面宽 Section Width	外直径 Overall Diameter	最大负荷 Max. Load	标准气压 Pressure	行驶速度 Speed Index	有无内胎 TT/TL
			(mm)	(mm)	(mm)	(Kg)	(KPa)	km/h	
18.4-30	W16L	12	36	467	1550	3180	230	30	TT



# R-1D

TRACTOR TIRE (DRYLAND)

## 适用场景/Applicable Operation Conditions

农田作业兼短途运输  
Farmland operations and short-distance transportation

## 产品介绍/Product Introductions

适用于拖拉机驱动轮使用,具有良好的牵引性、耐磨性和自洁性能。

Suitable for use on tractor drive wheels, with good traction, wear resistance, and self-cleaning performance.

适合旱田作业并兼顾短途运输。

Suitable for dry field operations and short-distance transportation.

## 适配车型/Compatible Models



拖拉机  
Tractor

## 技术参数/Technical Specifications

规格 Tire Size	标准轮辋 Standard Rim	层级 Ply Rating	花纹深度 Tread Depth (mm)	断面宽 Section Width (mm)	外直径 Overall Diameter (mm)	最大负荷 Max. Load (Kg)	标准气压 Pressure (KPa)	行驶速度 Speed Index km/h	有无内胎 TT/TL
6.00-12	4.50E	8	20	165	640	520	330	30	TT



# R-1S

TRACTOR TIRE (DRYLAND)

## 适用场景/Applicable Operation Conditions

农田喷灌作业  
Field irrigation works

## 产品介绍/Product Introductions

大角度花纹设计,抓着力好,具有高通过性和自洁性能。

Wide-angle pattern design, good grip, with high passability and self-cleaning performance.

适合旱田作业并兼顾短途运输。

Suitable for dry field operations and short-distance transportation.

具有良好的耐老化性能。

Excellent resistance to weathering & ageing performance.

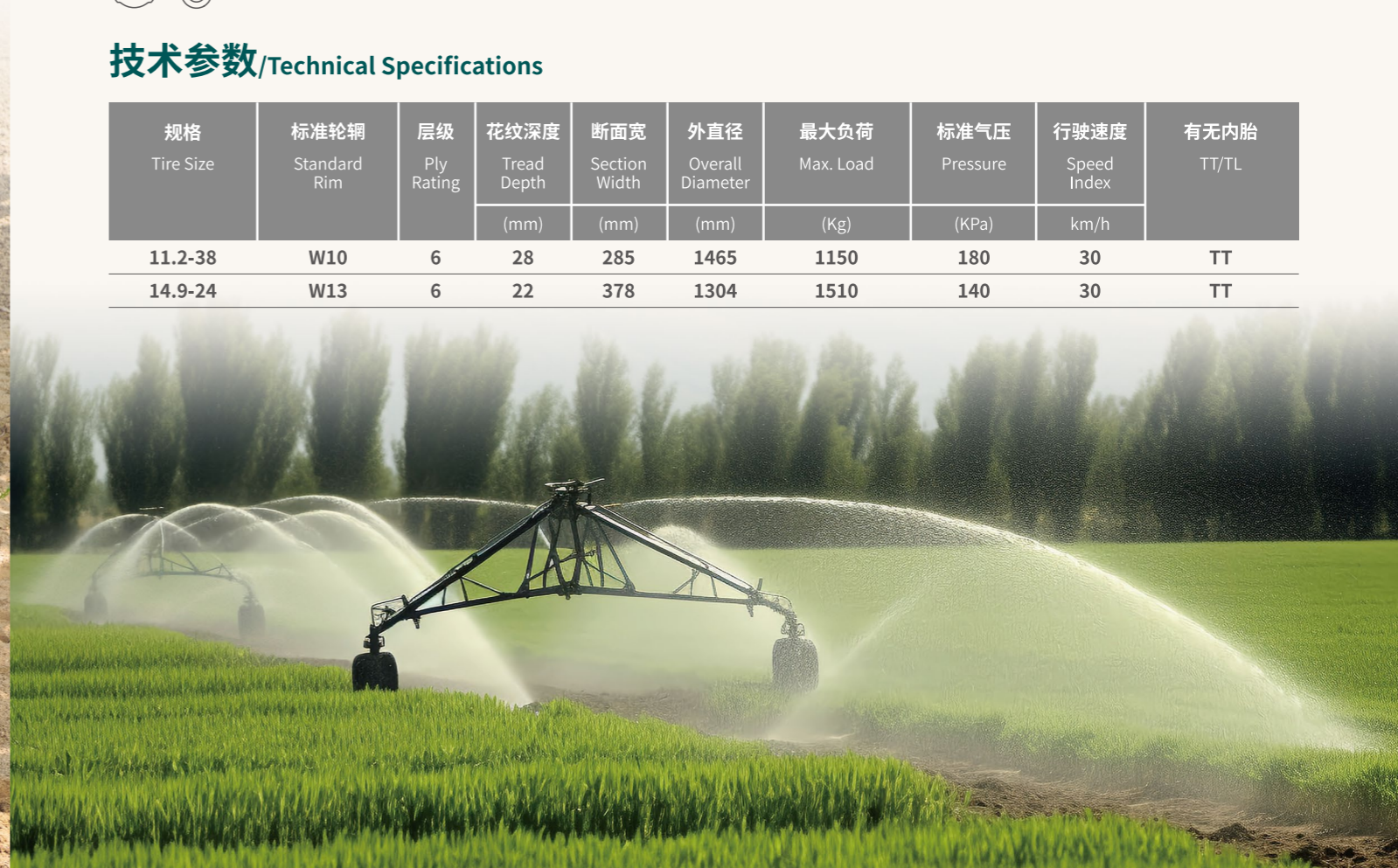
## 适配车型/Compatible Models



灌溉设备  
Irrigation Tire

## 技术参数/Technical Specifications

规格 Tire Size	标准轮辋 Standard Rim	层级 Ply Rating	花纹深度 Tread Depth (mm)	断面宽 Section Width (mm)	外直径 Overall Diameter (mm)	最大负荷 Max. Load (Kg)	标准气压 Pressure (KPa)	行驶速度 Speed Index km/h	有无内胎 TT/TL
11.2-38	W10	6	28	285	1465	1150	180	30	TT
14.9-24	W13	6	22	378	1304	1510	140	30	TT



# GS511

F A R M M A C H I N E R Y T I R E

## 适用场景/Applicable Operation Conditions

农业作业  
Agricultural operations

## 产品介绍/Product Introductions

具有良好的耐磨性能, 兼顾短途运输。  
It has good wear resistance and suitable for short-distance transportation.

## 适配车型/Compatible Models



## 技术参数/Technical Specifications

规格 Tire Size	标准轮辋 Standard Rim	层级 Ply Rating	花纹深度 Tread Depth	断面宽 Section Width	外直径 Overall Diameter	最大负荷 Max. Load	标准气压 Pressure	行驶速度 Speed Index	有无内胎 TT/TL
			(mm)	(mm)	(mm)	(Kg)	(KPa)	km/h	
4.00-8	3.00D	4	6.5	112	415	225	275	30	TT



# GS512

F A R M M A C H I N E R Y T I R E

## 适用场景/Applicable Operation Conditions

农业作业  
Agricultural operations

## 产品介绍/Product Introductions

具有良好的耐磨性能, 兼顾短途运输。  
It has good wear resistance and suitable for short-distance transportation.

花纹角度大, 抓着力和连续性能好。  
The pattern angle is large, providing good grip and continuous performance.

## 适配车型/Compatible Models



## 技术参数/Technical Specifications

规格 Tire Size	标准轮辋 Standard Rim	层级 Ply Rating	花纹深度 Tread Depth	断面宽 Section Width	外直径 Overall Diameter	最大负荷 Max. Load	标准气压 Pressure	行驶速度 Speed Index	有无内胎 TT/TL
			(mm)	(mm)	(mm)	(Kg)	(KPa)	km/h	
4.50-14	3.00D	8	7	122	602	580	520	30	TT
4.50-12	3.00B	8	7	127	552	550	520	30	TT
5.00-12	3.50B	8	6	130	570	465	420	30	TT
5.50-16	4.00E	8	8	150	685	700	420	30	TT
4.50-16	3.00D	8	7	122	655	650	460	30	TT
5.00-16	4.00E	8	8	130	655	550	420	30	TT





# GS513

F A R M M A C H I N E R Y T I R E

## 适用场景/Applicable Operation Conditions

农业作业  
Agricultural operations

## 产品介绍/Product Introductions

花纹快粗壮，高牵引性和高耐磨。  
The pattern is thick and robust, with high traction and high wear resistance.

兼顾短途运输。  
Suitable for short-distance transportation.

## 适配车型/Compatible Models



## 技术参数/Technical Specifications

规格 Tire Size	标准轮辋 Standard Rim	层级 Ply Rating	花纹深度 Tread Depth	断面宽 Section Width	外直径 Overall Diameter	最大负荷 Max. Load	标准气压 Pressure	行驶速度 Speed Index	有无内胎 TT/TL
			(mm)	(mm)	(mm)	(Kg)	(KPa)	km/h	
5.50-13	4.00B	8	8	150	610	600	420	30	TT



# GS516

F A R M M A C H I N E R Y T I R E

## 适用场景/Applicable Operation Conditions

农业作业  
Agricultural operations

## 产品介绍/Product Introductions

适用于农机具，具有良好的耐磨性能，抓着力好兼顾短途运输。  
Suitable for agricultural machinery, with good wear resistance and strong grip, also suitable for short-distance transportation.

## 适配车型/Compatible Models



## 技术参数/Technical Specifications

规格 Tire Size	标准轮辋 Standard Rim	层级 Ply Rating	花纹深度 Tread Depth	断面宽 Section Width	外直径 Overall Diameter	最大负荷 Max. Load	标准气压 Pressure	行驶速度 Speed Index	有无内胎 TT/TL
			(mm)	(mm)	(mm)	(Kg)	(KPa)	km/h	
4.00-14	3.00D	6	7	112	570	390	350	30	TT
4.00-12	3.00D	6	7	112	520	345	350	30	TT



# GS517

F A R M M A C H I N E R Y T I R E

## 适用场景/Applicable Operation Conditions

农业作业  
Agricultural operations

## 产品介绍/Product Introductions

适用于农机具, 具有良好的耐磨性能, 抓着力好兼顾短途运输。  
Suitable for agricultural machinery, with good wear resistance and strong grip, also suitable for short-distance transportation.

## 适配车型/Compatible Models



## 技术参数/Technical Specifications

规格 Tire Size	标准轮辋 Standard Rim	层级 Ply Rating	花纹深度 Tread Depth	断面宽 Section Width	外直径 Overall Diameter	最大负荷 Max. Load	标准气压 Pressure	行驶速度 Speed Index	有无内胎 TT/TL
			(mm)	(mm)	(mm)	(Kg)	(KPa)	km/h	
4.50-14	3.00D	8	7	122	602	580	520	30	TT
4.50-16	3.00D	8	7	122	655	650	460	30	TT
5.00-16	4.00E	8	8	130	655	550	420	30	TT
5.50-16	4.00E	8	8	150	685	700	420	30	TT



# F-2M

F A R M M A C H I N E R Y T I R E

## 适用场景/Applicable Operation Conditions

农业作业  
Agricultural operations

## 产品介绍/Product Introductions

适用于耕地及其短途运输。  
Suitable for tillage and short-distance transportation.

具有良好的导向性能和防侧滑性能。  
Has good guiding performance and anti-skid performance.

## 适配车型/Compatible Models



## 技术参数/Technical Specifications

规格 Tire Size	标准轮辋 Standard Rim	层级 Ply Rating	花纹深度 Tread Depth	断面宽 Section Width	外直径 Overall Diameter	最大负荷 Max. Load	标准气压 Pressure	行驶速度 Speed Index	有无内胎 TT/TL
			(mm)	(mm)	(mm)	(Kg)	(KPa)	km/h	
10.00-16	W8L	10	21	275	910	1325	340	30	TL/TT
11.00-16	W10L	10	24	315	970	1485	310	30	TL/TT



# GS521

F A R M M A C H I N E R Y T I R E

## 适用场景/Applicable Operation Conditions

农业作业  
Agricultural operations

## 产品介绍/Product Introductions

混合花纹的设计, 提高轮胎抓着力, 具有高耐磨防侧滑性能, 兼顾短途运输作业。

The design features a mixed pattern that enhances tire grip, offers high wear resistance and anti-skid performance, also suitable for short-distance transportation.

## 适配车型/Compatible Models



## 技术参数/Technical Specifications

规格 Tire Size	标准轮辋 Standard Rim	层级 Ply Rating	花纹深度 Tread Depth	断面宽 Section Width	外直径 Overall Diameter	最大负荷 Max. Load	标准气压 Pressure	行驶速度 Speed Index	有无内胎 TT/TL
			(mm)	(mm)	(mm)	(Kg)	(KPa)	km/h	
4.00-8	3.00D	4	6.5	112	415	225	275	30	TT



# I-1

F A R M M A C H I N E R Y T I R E

## 适用场景/Applicable Operation Conditions

农业作业  
Agricultural operations

## 产品介绍/Product Introductions

多条形花纹设计, 具有良好的导向性能。

Multi-stripe pattern design with good driving performance.

具有良好的耐磨性能, 兼顾短途运输。

Excellent wear resistance, suitable for short-distance transportation.

## 适配车型/Compatible Models



## 技术参数/Technical Specifications

规格 Tire Size	标准轮辋 Standard Rim	层级 Ply Rating	花纹深度 Tread Depth	断面宽 Section Width	外直径 Overall Diameter	最大负荷 Max. Load	标准气压 Pressure	行驶速度 Speed Index	有无内胎 TT/TL
			(mm)	(mm)	(mm)	(Kg)	(KPa)	km/h	
11L-15	8LB	10	9	280	775	1285	280	30	TL
9.5L-15	8LB	10	8	240	765	1100	280	30	TL
11L-14	8KB	10	9	280	750	1245	220	30	TL
11L-15	W8L	10	9	280	775	1285	280	30	TL
11L-16	W8L	10	9	280	800	1340	280	30	TL





# GS525

FARM MACHINERY TIRE

## 适用场景/Applicable Operation Conditions

农业作业  
Agricultural operations

## 产品介绍/Product Introductions

特殊的花纹设计赋予轮胎极佳的抓着力，提高轮胎耐磨性能，延长使用周期，适用于短途运输。

The special pattern design gives the tire excellent grip, improves its wear resistance, extends its service life, also suitable for short-distance transportation.

## 适配车型/Compatible Models



## 技术参数/Technical Specifications

规格 Tire Size	标准轮辋 Standard Rim	层级 Ply Rating	花纹深度 Tread Depth (mm)	断面宽 Section Width (mm)	外直径 Overall Diameter (mm)	最大负荷 Max. Load (Kg)	标准气压 Pressure (KPa)	行驶速度 Speed Index km/h	有无内胎 TT/TL
4.50-12	3.00B	8	7	127	552	550	520	30	TT
5.00-12	3.50B	8	6	130	570	465	420	30	TT



# F-2

FARM MACHINERY TIRE

## 适用场景/Applicable Operation Conditions

农业作业  
Agricultural operations

## 产品介绍/Product Introductions

加宽的中间花纹“筋”设计，大大增加轮胎的耐磨性能，具有极佳的转向性能。

The widened central tread 'rib' design significantly enhances the tire's wear resistance and provides excellent steering performance.

## 适配车型/Compatible Models



## 技术参数/Technical Specifications

规格 Tire Size	标准轮辋 Standard Rim	层级 Ply Rating	花纹深度 Tread Depth (mm)	断面宽 Section Width (mm)	外直径 Overall Diameter (mm)	最大负荷 Max. Load (Kg)	标准气压 Pressure (KPa)	行驶速度 Speed Index km/h	有无内胎 TT/TL
4.00-12	3.00D	6	7	110	535	280	400	30	TT
4.00-14	3.00D	6	7	112	570	390	350	30	TT



# F-2B

F A R M M A C H I N E R Y T I R E

## 适用场景/Applicable Operation Conditions

农业作业  
Agricultural operations

## 产品介绍/Product Introductions

加宽的中间花纹“筋”设计, 大大增加轮胎的耐磨性能, 具有极佳的转向性能。

The widened central tread 'rib' design significantly enhances the tire's wear resistance and provides excellent steering performance.

## 适配车型/Compatible Models



拖拉机  
Tractor

## 技术参数/Technical Specifications

规格 Tire Size	标准轮辋 Standard Rim	层级 Ply Rating	花纹深度 Tread Depth	断面宽 Section Width	外直径 Overall Diameter	最大负荷 Max. Load	标准气压 Pressure	行驶速度 Speed Index	有无内胎 TT/TL
			(mm)	(mm)	(mm)	(Kg)	(KPa)	km/h	
5.00-15	4.00J	6	8.5	140	665	465	420	30	TT
6.00-16	4.00E	6	10	160	740	560	340	30	TT
6.00-16	4.00E	8	10	160	740	675	450	30	TT
6.50-16	4.50E	8	10	175	760	735	420	30	TT
6.50-20	5.00F	8	11	180	860	865	420	30	TT

# F-2C

F A R M M A C H I N E R Y T I R E

## 适用场景/Applicable Operation Conditions

农业作业  
Agricultural operations

## 产品介绍/Product Introductions

加宽的中间花纹“筋”设计, 大大增加轮胎的耐磨性能。  
The widened central tread 'rib' design greatly enhances the tire's wear resistance.

花纹采用经典的“三条筋”设计, 使拖拉机在松软的耕地作业时获得优异的转向性能。

The tread features a classic 'three-rib' design, providing excellent steering performance for tractors working on soft and loose soil.

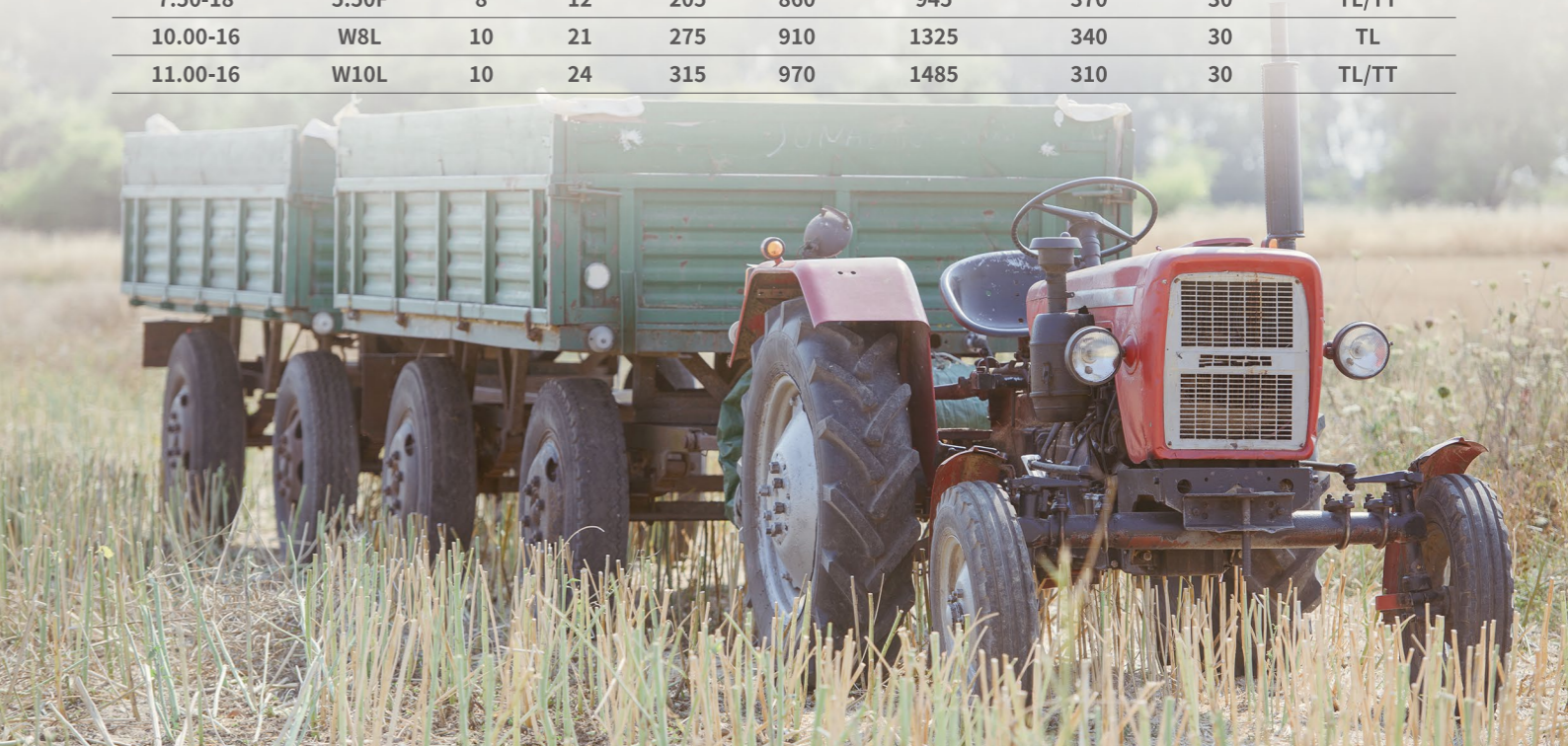
## 适配车型/Compatible Models



拖拉机  
Tractor

## 技术参数/Technical Specifications

规格 Tire Size	标准轮辋 Standard Rim	层级 Ply Rating	花纹深度 Tread Depth	断面宽 Section Width	外直径 Overall Diameter	最大负荷 Max. Load	标准气压 Pressure	行驶速度 Speed Index	有无内胎 TT/TL
			(mm)	(mm)	(mm)	(Kg)	(KPa)	km/h	
7.50-16	5.50F	8	11	205	810	870	370	30	TT
7.50-18	5.50F	8	12	205	860	945	370	30	TL/TT
10.00-16	W8L	10	21	275	910	1325	340	30	TL
11.00-16	W10L	10	24	315	970	1485	310	30	TL/TT



# F-2D

F A R M M A C H I N E R Y T I R E

## 适用场景/Applicable Operation Conditions

农业作业  
Agricultural operations

## 产品介绍/Product Introductions

适用于耕地及其短途运输。  
Suitable for tillage and short-distance transportation.

具有良好的导向性能和防侧滑性能。  
Has good guiding performance and anti-skid performance.

## 适配车型/Compatible Models



## 技术参数/Technical Specifications

规格 Tire Size	标准轮辋 Standard Rim	层级 Ply Rating	花纹深度 Tread Depth (mm)	断面宽 Section Width (mm)	外直径 Overall Diameter (mm)	最大负荷 Max. Load (Kg)	标准气压 Pressure (KPa)	行驶速度 Speed Index km/h	有无内胎 TT/TL
7.50-16	5.50F	8	11	205	810	870	370	30	TT
7.50-18	5.50F	8	12	205	860	945	370	30	TL/TT
10.00-16	W8L	10	21	275	910	1325	340	30	TL
11.00-16	W10L	10	24	315	970	1485	310	30	TL/TT
9.00-20	W7	10	23	235	960	1250	370	30	TT



# GS532

F A R M M A C H I N E R Y T I R E

## 适用场景/Applicable Operation Conditions

农业作业  
Agricultural operations

## 产品介绍/Product Introductions

块状花纹具有良好的牵引性和自洁性。  
The block pattern has good traction and self-cleaning performance.

具有良好的耐天候老化性能。  
Excellent resistance to weathering & ageing performance.

## 适配车型/Compatible Models



## 技术参数/Technical Specifications

规格 Tire Size	标准轮辋 Standard Rim	层级 Ply Rating	花纹深度 Tread Depth (mm)	断面宽 Section Width (mm)	外直径 Overall Diameter (mm)	最大负荷 Max. Load (Kg)	标准气压 Pressure (KPa)	行驶速度 Speed Index km/h	有无内胎 TT/TL
12.00-18	9.00V	10	17	327	1090	1800	350	30	TT





# GS533

F A R M M A C H I N E R Y T I R E

## 适用场景/Applicable Operation Conditions

农业作业  
Agricultural operations

## 产品介绍/Product Introductions

混合花纹,适用于农机具,具有良好的耐磨性能,抓着力好兼顾短途运输。

Mixed pattern, suitable for agricultural machinery, with good wear resistance and strong grip, as well as the short-distance transportation.

## 适配车型/Compatible Models



农机具  
Farm Machinery



## 技术参数/Technical Specifications

规格 Tire Size	标准轮辋 Standard Rim	层级 Ply Rating	花纹深度 Tread Depth (mm)	断面宽 Section Width (mm)	外直径 Overall Diameter (mm)	最大负荷 Max. Load (Kg)	标准气压 Pressure (KPa)	行驶速度 Speed Index km/h	有无内胎 TT/TL
6.00-16	4.50E	8	19	165	745	550	360	30	TT
6.50-16	5.00F	8	24	180	765	640	300	30	TT

# GS535

F A R M M A C H I N E R Y T I R E

## 适用场景/Applicable Operation Conditions

农业作业  
Agricultural operations

## 产品介绍/Product Introductions

混合花纹,适用于农机具,具有良好的耐磨性能,抓着力好兼顾短途运输。

Mixed pattern, suitable for agricultural machinery, with good wear resistance and strong grip, as well as the short-distance transportation.

## 适配车型/Compatible Models



农机具  
Farm Machinery



## 技术参数/Technical Specifications

规格 Tire Size	标准轮辋 Standard Rim	层级 Ply Rating	花纹深度 Tread Depth (mm)	断面宽 Section Width (mm)	外直径 Overall Diameter (mm)	最大负荷 Max. Load (Kg)	标准气压 Pressure (KPa)	行驶速度 Speed Index km/h	有无内胎 TT/TL
5.50-16	4.00E	8	8	150	685	700	420	30	TT



# F-3B

F A R M M A C H I N E R Y T I R E

## 适用场景/Applicable Operation Conditions

农业作业  
Agricultural operations

## 产品介绍/Product Introductions

适用于耕地及其短途运输。  
Suitable for tillage and short-distance transportation.

具有良好的导向性能和防侧滑性能。  
Has good guiding performance and anti-skid performance.

## 适配车型/Compatible Models



联合收割机  
Combine Harvester



## 技术参数/Technical Specifications

规格 Tire Size	标准轮辋 Standard Rim	层级 Ply Rating	花纹深度 Tread Depth (mm)	断面宽 Section Width (mm)	外直径 Overall Diameter (mm)	最大负荷 Max. Load (Kg)	标准气压 Pressure (KPa)	行驶速度 Speed Index km/h	有无内胎 TT/TL
11L-15	8LB	10	13	280	810	1190	340	30	TL
11L-16	8LB	10	13.5	280	835	1240	340	30	TL

# F-3C

F A R M M A C H I N E R Y T I R E

## 适用场景/Applicable Operation Conditions

农业作业  
Agricultural operations

## 产品介绍/Product Introductions

适用于耕地及其短途运输。  
Suitable for tillage and short-distance transportation.

具有良好的导向性能和防侧滑性能。  
Has good guiding performance and anti-skid performance.

## 适配车型/Compatible Models



联合收割机  
Combine Harvester



## 技术参数/Technical Specifications

规格 Tire Size	标准轮辋 Standard Rim	层级 Ply Rating	花纹深度 Tread Depth (mm)	断面宽 Section Width (mm)	外直径 Overall Diameter (mm)	最大负荷 Max. Load (Kg)	标准气压 Pressure (KPa)	行驶速度 Speed Index km/h	有无内胎 TT/TL
10.0/75-15.3	9.00	10	9	264	760	1525	390	30	TL
11.5/80-15.3	9.00	10	9	290	845	1930	340	30	TL



# GS539

## 适用场景 Applicable Operation Conditions

城乡道路运输作业  
Urban and rural road transportation operations

## 产品介绍 Product Introductions

花纹块粗壮，饱和度高，冠部独特钢片设计提高轮胎耐磨性和牵引性能，适合中、长途运输作业，延长轮胎使用周期。

The tread blocks are robust and having high saturation. The unique steel plate design at the crown enhances tire wear resistance and traction performance, making it suitable for medium to long-distance transportation operations, thereby extending the tire's service life.



## 适配车型 Compatible Models



农用三轮车  
Farm Tricycle

## 技术参数 Technical Specifications

规格 tire size	标准轮辋 standard rim	层级 ply rating	花纹深度 Tread Depth (mm)	断面宽 section width (mm)	外直径 overall diameter (mm)	单胎负荷 Single Load (Kg)	双胎负荷 Dual Load (Kg)	充气气压 pressure (KPa)	行驶速度 Speed Index km/h	有无内胎 TT/TL
7.00-16LT	5.50F	14	10	200	775	1320	1180	730	/	TT
7.50-16LT	6.00G	14	11	215	805	1500	1320	730	/	TT
8.25-16LT	6.50H	14	12	235	855	1700	1500	630	/	TT



# I-3C

## 适用场景 Applicable Operation Conditions

农田作业兼短途运输  
Farmland operations and short-distance transportation

## 产品介绍 Product Introductions

超强的牵引型花纹设计, 稳定性能好, 更好的土壤保护性能。

The ultra-strong traction pattern design provides stable performance and better soil protection.

强度高、载重性能好, 耐磨性好, 抗刺扎性能好。  
High strength, good load-bearing capacity, excellent wear resistance, and good puncture resistance.



## 适配车型 Compatible Models



打捆机  
Baler Tire

## 技术参数 Technical Specifications

规格 Tire Size	标准轮辋 Standard Rim	层级 Ply Rating	花纹深度 Tread Depth (mm)	断面宽 Section Width (mm)	外直径 Overall Diameter (mm)	最大负荷 Max. Load (Kg)	标准气压 Pressure (KPa)	行驶速度 Speed Index km/h	有无内胎 TT/TL
10.0/75-15.3	9.00	10	20	264	780	1525	390	30	TL
320/60-15.3	9.00	16	15	340	760	2500	500	30	TL
400/60-15.5	13.00	16	20	404	874	2240	400	30	TL
500/50-17	16.00	14	16	500	945	3550	380	30	TL
500/45-22.5	16.00	16	25	503	1022	2360	280	30	TL

# I-3D

B A L E R T I R E

## 适用场景/Applicable Operation Conditions

农业作业  
Agricultural operations

## 产品介绍/Product Introductions

强度高、载重性能好，耐磨性好，抗刺扎性能好。  
High strength, good load-bearing capacity, excellent wear resistance, and good puncture resistance.

## 适配车型/Compatible Models



打捆机  
Baler Tire



## 技术参数/Technical Specifications

规格 Tire Size	标准轮辋 Standard Rim	层级 Ply Rating	花纹深度 Tread Depth (mm)	断面宽 Section Width (mm)	外直径 Overall Diameter (mm)	最大负荷 Max. Load (Kg)	标准气压 Pressure (KPa)	行驶速度 Speed Index km/h	有无内胎 TT/TL
400/60-15.5	13	16	20	404	874	2240	400	30	TL

# I-3E

B A L E R T I R E

## 适用场景/Applicable Operation Conditions

农业作业  
Agricultural operations

## 产品介绍/Product Introductions

强度高、载重性能好，耐磨性好，抗刺扎性能好。  
High strength, good load-bearing capacity, excellent wear resistance, and good puncture resistance.

## 适配车型/Compatible Models



打捆机  
Baler Tire



## 技术参数/Technical Specifications

规格 Tire Size	标准轮辋 Standard Rim	层级 Ply Rating	花纹深度 Tread Depth (mm)	断面宽 Section Width (mm)	外直径 Overall Diameter (mm)	最大负荷 Max. Load (Kg)	标准气压 Pressure (KPa)	行驶速度 Speed Index km/h	有无内胎 TT/TL
10.0/75-15.3	9.00	10	20	264	780	1525	390	30	TL
15.0/55-17	13	14	13	391	850	2575	490	30	TL
19.0/45-17	16	14	16	491	866	2800	390	30	TL
500/50-17	16	14	16	500	945	3550	380	30	TL
400/60-15.5	13	16	20	404	874	2240	400	30	TL





### 适配车型 Compatible Models



拖拉机  
Tractor

### 技术参数 Technical Specifications

规格 Tire Size	标准轮辋 Standard Rim	层级 Ply Rating	花纹深度 Tread Depth	断面宽 Section Width	外直径 Overall Diameter	最大负荷 Max. Load	标准气压 Pressure	行驶速度 Speed Index	有无内胎 TT/TL
			(mm)	(mm)	(mm)	(Kg)	(KPa)	km/h	
6.00-12	4.50E	8	28	165	655	520	330	30	TT
6.00-14	4.50E	8	29	165	705	530	330	30	TT
9.5-28	W8	10	52	240	1166	1280	320	30	TT
9.5-32	W8	10	56	240	1276	1360	320	30	TT
9.5-38	W8	10	57	240	1426	1525	320	30	TT
9.5-48	W8	12	58	240	1426	1980	420	30	TT
11.2-20	W10	10	53	285	1035	1270	300	30	TT
11.2-24	W10	10	50	285	1135	1280	300	30	TT
11.2-28	W10	10	54	285	1235	1485	300	30	TT
11-32	W10	10	50	305	1392	1530	270	30	TT
12-38	DW11	12	62	330	1612	2050	300	30	TT
12.4-28	W11	10	52	315	1293	1690	280	30	TT
12.4-48	W11	12	66	315	1790	2975	320	30	TT
420/85D26 16.9-26	W15L	16	60	430	1473	2800	280	30	TL/TT
420/85D28 16.9-28	W15L	16	60	430	1523	2900	280	30	TL/TT
420/85D30 16.9-30	W15L	16	60	430	1573	3030	280	30	TL/TT
460/85D38 18.4-38	W16L	16	75	467	1800	4575	350	30	TL/TT
520/85D42 20.8-42	W18L	16	70	528	1985	4700	260	30	TL/TT

# R-2

### 适用场景 Applicable Operation Conditions

农田作业兼短途运输  
Farmland operations and short-distance transportation

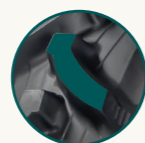
### 产品介绍 Product Introductions

适合水田改旱田场景、也可与喷淋喷灌机和联合收割机。

Suitable for conditions of transforming paddy fields into dry fields; Applicable for Sprinkler irrigation machines and Combine-harvester.

花纹加深, 粗壮, 具有良好的牵引性和自洁性。  
Deepened and robust patterns enable tire having good traction and self-cleaning performance.

具有良好的耐天候老化性能。  
Excellent resistance to weathering & ageing performance.



# R-2C

DUAL-PURPOSE TRACTOR TIRE (PADDY-UPLAND)

## 适用场景/Applicable Operation Conditions

农田作业兼短途运输  
Farmland operations and short-distance transportation

## 产品介绍/Product Introductions

花纹深度加深, 适合水旱两用。  
The tread depth is deepened, suitable for both watery and dry conditions.

花纹形态美观, 兼顾了高牵引性能和平滑性能。  
The tread pattern is aesthetically nice-looking, balancing high traction performance and smoothness.

耐磨性能好, 打滑率低。  
Good wear resistance and Lower slippery rate.



## 适配车型/Compatible Models



## 技术参数/Technical Specifications

规格 Tire Size	标准轮辋 Standard Rim	层级 Ply Rating	花纹深度 Tread Depth (mm)	断面宽 Section Width (mm)	外直径 Overall Diameter (mm)	最大负荷 Max. Load (Kg)	标准气压 Pressure (KPa)	行驶速度 Speed Index km/h	有无内胎 TT/TL TT
6.00-14	4.50E	8	30	165	690	530	330	30	

# R-2

DUAL-PURPOSE TRACTOR TIRE (PADDY-UPLAND)

## 适用场景/Applicable Operation Conditions

农田作业兼短途运输  
Farmland operations and short-distance transportation

## 产品介绍/Product Introductions

适合水田改旱田场景, 也适用喷淋喷灌机。  
Suitable for conditions of transforming paddy fields into dry fields; Applicable for sprinkler irrigation machines.

花纹加深设计, 具有良好的牵引性和自洁性。  
Deepened pattern design, providing good traction and self-cleaning performance.

具有良好的抗天候及老化性能。  
Excellent resistance to weathering and ageing.



## 适配车型/Compatible Models



## 技术参数/Technical Specifications

规格 Tire Size	标准轮辋 Standard Rim	层级 Ply Rating	花纹深度 Tread Depth (mm)	断面宽 Section Width (mm)	外直径 Overall Diameter (mm)	最大负荷 Max. Load (Kg)	标准气压 Pressure (KPa)	行驶速度 Speed Index km/h	有无内胎 TT/TL TT
6.50-16	5.00F	8	30	180	765	640	300	30	TT
7.50-16	5.50F	8	30	205	834	770	280	30	TT
7.50-20	5.50F	8	30	205	934	915	280	30	TT
8.3-20	W7	8	32	210	918	850	310	30	TT
8.3-24	W7	8	35	210	1018	920	300	30	TT
9.5-24	W8	10	36	240	1076	1200	320		TT





# R-2

## 适用场景 Applicable Operation Conditions

农田作业兼短途运输  
Farmland operations and short-distance transportation

## 产品介绍 Product Introductions

适合水田改旱田场景、也可用于喷淋喷灌机和联合收割机。

Suitable for conditions of transforming paddy fields into dry fields; applicable for sprinkler irrigation machines and confined harvesters.

花纹加深, 粗壮, 具有良好的牵引性和自洁性。  
Deepened and robust patterns, with good traction and self-cleaning performance.

具有良好的耐天候老化性能。  
Excellent resistance to weathering & ageing performance.



## 适配车型 Compatible Models



拖拉机  
Tractor



联合收割机  
Combine Harvester

## 技术参数 Technical Specifications

规格 Tire Size	标准轮辋 Standard Rim	层级 Ply Rating	花纹深度 Tread Depth	断面宽 Section Width	外直径 Overall Diameter	最大负荷 Max. Load	标准气压 Pressure	行驶速度 Speed Index	有无内胎 TT/TL
			(mm)	(mm)	(mm)	(Kg)	(KPa)	km/h	
11.2-24	W10	10	70	285	1105	1150	230	30	TT
12.4-24	W11	10	70	315	1195	1285	220	30	TT
14.9-24	W13	12	71	378	1305	1600	180	30	TT
14.9-28	W13	12	71	378	1406	1700	180	30	TT
18.4-30	W16L	10	82	467	1550	2500	180	30	TT
18.4-34	W16L	10	82	467	1655	2725	180	30	TT
18.4-38	W16L	10	82	467	1755	2900	180	30	TT
23.1-26	DW20	12	85	587	1605	3250	170	30	TT
23.1-30	DW20	10	85	587	1741	3460	140	30	TT



# CR-1



## 适用场景 Applicable Operation Conditions

农田作业  
Agricultural operations

## 产品介绍 Product Introductions

适合水田改旱田场景,也适用喷淋喷灌机。  
Suitable for conditions of transforming paddy fields into dry fields; Applicable for Sprinkler irrigation machines and Combine-harvester.



花纹加深设计,具有良好的牵引性和自洁性。  
Deepened pattern design provides good traction and self-cleaning performance.



具有良好的耐天候老化性能。  
Excellent resistance to weathering & ageing performance.

## 适配车型 Compatible Models



拖拉机  
Tractor

## 技术参数 Technical Specifications

规格 tire size	标准轮辋 standard rim	层级 ply rating	花纹深度 Tread Depth	断面宽 section width	外直径 overall diameter	最大负荷 Max. Load	标准气压 pressure	行驶速度 Speed Index	有无内胎 TT/TL
			(mm)	(mm)	(mm)				
12.4-48	W11	12	38	315	1760	2975	320	30	TT
12.4-54	W11	12	38	315	1938	4000	320	30	TT



# PR-1



## 适用场景 Applicable Operation Conditions

农业作业  
Agricultural operations

## 产品介绍 Product Introductions

适合水田场景。  
Suitable for paddy field conditions.



花纹加深设计, 具有良好的牵引性和自洁性。  
Deepened pattern design provides good traction and self-cleaning performance.



具有良好的耐天候老化性能。  
Excellent resistance to weathering & ageing performance.

## 适配车型 Compatible Models



拖拉机  
Tractor

## 技术参数 Technical Specifications

规格 Tire Size	标准轮辋 Standard Rim	层级 Ply Rating	花纹深度 Tread Depth	断面宽 Section Width	外直径 Overall Diameter	最大负荷 Max. Load (Kg)	标准气压 Pressure (KPa)	行驶速度 Speed Index km/h	有无内胎 TT/TL
			(mm)	(mm)	(mm)				
6.00-12	4.50E	6	45	160	690	425	270	30	TT
6.00-14	4.50E	6	50	160	740	470	270	30	TT
6.50-16	5.00F	6	60	165	830	565	250	30	TT
7.50-16	5.50F	6	68	195	890	750	325	30	TT
8.3-20	W7	8	68	210	950	1130	350	30	TT
8.3-24	W7	8	68	210	1050	1275	330	30	TT
9.5-20	W8	6	70	240	1050	1140	240	30	TT
9.5-24	W8	8	70	240	1150	1475	290	30	TT
11-32	W10	10	72	305	1460	1400	250	30	TT
11.2-24	W10	10	72	285	1205	1800	310	30	TT
11.2-28	W10	10	80	285	1305	2050	310	30	TT
13.6-24	W12	10	85	345	1265	2350	250	30	TT
13.6-38	W12	10	80	345	1710	2780	250	30	TT
14.9-24	W13	10	72	378	1410	1990	230	30	TT
14.9-26	W13	10	72	378	1460	2040	230	30	TT
14.9-28	W13	10	72	378	1510	2150	230	30	TT
16.9-28	W15L	10	80	430	1533	2380	200	30	TT
16.9-30	W15L	10	80	430	1585	2455	200	30	TT
16.9-34	W15L	10	80	430	1685	3385	220	30	TT
18.4-38	W16L	12	88	467	1855	3575	230	30	TT
20.8-38	W18L	12	90	528	1972	4100	200	30	TT



# R-2

## 适用场景 Applicable Operation Conditions

农田作业  
Agricultural operations

## 产品介绍 Product Introductions

适合水田改旱田场景,也适用喷淋喷灌机。  
Suitable for conditions of transforming paddy fields into dry fields; Applicable for Sprinkler irrigation machines and Combine-harvester.

花纹加深,粗壮,具有良好的牵引性和自洁性。  
Deepened and robust patterns enable tire having good traction and self-cleaning performance.

具有良好的耐天候老化性能。  
Excellent resistance to weathering & ageing performance.



## 适配车型 Compatible Models



联合收割机  
Combine Harvester

## 技术参数 Technical Specifications

规格 Tire Size	标准轮辋 Standard Rim	层级 Ply Rating	花纹深度 Tread Depth (mm)	断面宽 Section Width (mm)	外直径 Overall Diameter (mm)	最大负荷 Max. Load (Kg)	标准气压 Pressure (KPa)	行驶速度 Speed Index km/h	有无内胎 TT/TL
15L-24	DW14	14	65	410	1360	3500	410	30	TT
18.4-30	W16L	14	68	467	1580	3705	290	30	TT
19.5L-24	DW16	14	65	495	1382	2480	270	30	TT
23.1-26	DW20	14	75	587	1662	4300	230	30	TT
28L-26	DW25	16	75	715	1673	4800	210	30	TT



**适配车型** Compatible Models



拖拉机  
Tractor



采棉机  
Cotton harvester



联合收割机  
Combine-harvester

# R-1W

**适用场景** Applicable Operation Conditions

农田作业  
Farmland operations

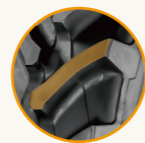
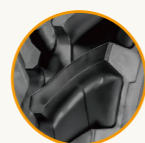
**产品介绍** Product Introductions

加宽加深花纹，特殊的配方设计使轮胎具有更好的抗刺扎性能，耐磨性能，打滑率低。

A wider and deeper patterns with a unique formula design gives the tire better puncture resistance, wear resistance, and Lower Slippery rate.

具有优异的牵引力和自洁性。  
It has excellent traction and self-cleaning performance.

具有良好的耐天候老化性能。  
Excellent resistance to weathering & ageing performance.



**技术参数** Technical Specifications

规格 Tire Size		标准轮辋 Standard Rim	负荷指数 Load Index	花纹深度 Tread Depth	断面宽 Section Width	外直径 Overall Diameter	单胎负荷 Single Load	标准气压 Pressure	速度级别 Speed Index	有无内胎 TT/TL
公制 Metric Unit	英制 Imperial Unit									
420/85R30	16.9R30	W13	140	48	418	1476	2500	160	A8/B	TL
460/85R30	18.4R30	W14L	145	50	455	1544	2900	160	A8/B	TL
520/85R42	20.8R42	DW16L	157	51	516	1951	4125	160	A8/B	TL
520/85R42	20.8R42	DW16L	162	51	516	1951	5150	240	A8/B	TL
520/85R46	20.8R46	DW16L	158	51	516	2062	4250	160	A8/B	TL
540/65R28	/	W18L	149	48	550	1413	3250	240	A8/B	TL
540/65R30	/	W18L	150	48	550	1464	3350	240	A8/B	TL
600/65R28	/	W18L	154	50	591	1491	3750	240	A8/B	TL
600/70R30	/	W18L	158	51	591	1602	4250	240	A8/B	TL
650/65R38	/	DW20A	163	51	645	1811	4875	240	A8/B	TL
650/65R42	/	DW20A	170	51	645	1913	6000	320	A8/B	TL
710/70R38	/	DW23A	166	58	716	1959	5300	160	A8/B	TL
710/70R42	/	DW23A	173	58	716	2061	6500	240	A8/B	TL
800/65R32	/	DW25A	172	56	798	1853	6300	240	A8/B	TL
800/65R32	/	DW25A	178	56	798	1853	7500	320	A8/B	TL



# R-1W

## 适配车型 Compatible Models



拖拉机  
Tractor



采棉机  
Cotton harvester



联合收割机  
Combine-harvester

## 技术参数 Technical Specifications

### 适用场景 Applicable Operation Conditions

农田作业  
Farmland operations

### 产品介绍 Product Introductions

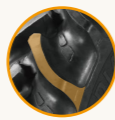
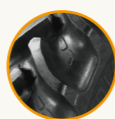
加宽加深花纹, 特殊的配方设计使轮胎具有更好的抗刺扎性能, 耐磨性能, 打滑率低。

A wider and deeper patterns with a unique formula design gives the tire better puncture resistance, wear resistance, and Lower Slippery rate.

具有优异的牵引力和自洁性。  
It has excellent traction and self-cleaning performance.

具有良好的耐天候老化性能。  
Excellent resistance to weathering & ageing performance.

低断面, 对土壤压实低。  
Low section tire, minimizing the soil compaction.



规格 Tire Size		标准轮辋 Standard Rim	负荷指数 Load Index	花纹深度 Tread Depth	断面宽 Section Width	外直径 Overall Diameter	单胎负荷 Single Load	标准气压 Pressure	速度级别 Speed Index	有无内胎 TT/TL
公制 Metric Unit	英制 Imperial Unit									
280/85R24	11.2R24	W9	115/112	41	282	1086	1215	160	A8/B	TL
320/85R24	12.4R24	W10	122/119	42	319	1154	1500	160	A8/B	TL
320/85R28	12.4R28	W10	124/121	42	319	1255	1600	160	A8/B	TL
380/85R24	14.9R24	W12	131/128	46	380	1256	1950	160	A8/B	TL
380/85R28	14.9R28	W12	130/130	46	380	1357	2060	160	A8/B	TL
420/85R28	16.9R28	W13	139/136	48	418	1425	2430	160	A8/B	TL
420/85R38	16.9R38	W13	144/141	51	418	1679	2650	160	A8/B	TL
460/85R34	18.4R34	W14L	147/144	49	455	1646	3075	160	A8/B	TL
460/85R38	18.4R38	W14L	149/146	50	455	1747	3250	160	A8/B	TL
520/85R38	20.8R38	DW16L	155/152	51	516	1849	3875	160	A8/B	TL



### 适配车型 Compatible Models



林业拖拉机  
Forestry tire for  
Tractor



集材机  
Wood logging  
skidder



伐木机  
Felling-machine

# LS-2

## 适用场景 Applicable Operation Conditions

山路及林区作业  
Mountainous and forest area operations

## 产品介绍 Product Introductions

独特的花纹块角度设计,使轮胎具有极佳的牵引力,花纹自洁性好。

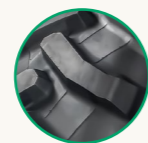
The unique tread block pattern and angle design that provides the tire excellent traction and good self-cleaning performance.

钢丝缓冲设计,承载能力强并提供优异的抗刺扎能力。

The steel wire cushioning design enhances load capacity and providing exceptional puncture resistance.

专用的配方设计,提供优异的耐切割及耐磨性能。

The specialized formulation design offers excellent cut resistance and wear resistance.



## 技术参数 Technical Specifications

规格 Tire Size		标准轮辋 Standard Rim	负荷指数 Load Index	花纹深度 Tread Depth	断面宽 Section Width	外直径 Overall Diameter	单胎负荷 Single Load	标准气压 Pressure	速度级别 Speed Index	有无内胎 TT/TL
公制 Metric Unit	英制 Imperial Unit									
320/85-24	12.4-24	W11	130/127	41	315	1160	1900	350	A8/B	TT/TL
380/85-24	14.9-24	W13	138/134	43	378	1265	2360	370	A8/B	TT/TL
380/85-26	14.9-26	W13	142/137	43	378	1315	2650	310	A8/B	TT/TL
460/85-26	18.4-26	DW16	150/147	52	467	1450	3350	270	A8/B	TT/TL
600/80-26	23.1-26	DW20	160	53	587	1630	4500	240	A6	TT/TL
710/65-26	28L-26	DW25	165	55	716	1650	5150	240	A6	TT/TL
——	28.1-26	DW25	166	55	715	1645	5300	240	A8	TT/TL
600/65-28	——	DW20	159	52	587	1680	4375	230	A8	TT/TL
420/85-30	16.9-30	W15L	149	48	430	1510	3250	320	A8	TT/TL
460/85-30	18.4-30	DW16	151	52	467	1575	3450	280	A8	TT/TL
600/80-30	23.1-30	DW20	161	54	587	1730	4625	270	A6	TT/TL
650/75-32	24.5L-32	DW21	172	55	622	1830	6300	310	A6	TT/TL
800/65-32	30.5L-32	DW27	180	55	775	1845	8000	340	A6	TT/TL
900/65-32	35.5L-32	DW31	184	58	902	2011	9000	280	A6	TT/TL
460/85-34	18.4-34	W16L	156/153	52	467	1680	4000	300	A8/B	TT/TL
520/85-38	20.8-38	DW18L	164	55	528	1835	5000	310	A8	TT/TL
520/85-42	20.8-42	DW18L	168	58	528	1935	5600	310	A8	TT/TL
900/65-32	35.5L-32	DH31	184	58	902	2011	10250	320	A6	TT/TL

# GS613

BIAS TRUCK TIRE (LIGHT DUTY)

## 适用场景/Applicable Operation Conditions

城际运输作业  
Intercity transportation operations

## 产品介绍/Product Introductions

花纹设计美观,有立体感,花纹沟较宽较深,能够提高对路面的抓着力,提供优越的牵引力,适合中、长途运输作业。

The pattern design is aesthetically nice-looking, having a three-dimensional effect. The grooves of the pattern are relatively wide and deep, which can enhance grip on the road surface and provide superior traction, making it suitable for medium to long-distance transportation operations.

## 适配车型/Compatible Models



## 技术参数/Technical Specifications

规格 Tire Size	标准轮辋 Standard Rim	层级 Ply Rating	花纹深度 Tread Depth	断面宽 Section Width	外直径 Overall Diameter	单胎负荷 Single Load	双胎负荷 Dual Load	充气气压 Pressure	行驶速度 Speed Index	有无内胎 TT/TL
			(mm)	(mm)	(mm)	(Kg)	(Kg)	(KPa)	km/h	
7.00-16LT	5.50F	12	10	200	775	1215	1060	670	/	TT
7.00-16LT	5.50F	14	10	200	775	1320	1180	770	/	TT
7.50-16LT	6.00G	12	11	215	805	1400	1250	670	/	TT
8.25-16LT	6.50H	12	12	235	855	1550	1360	560	/	TT
9.00-16LT	6.50H	12	12	255	890	1750	1550	560	/	TT
9.00-16LT	6.50H	14	12	255	890	1950	1700	670	/	TT

# GS616

BIAS TRUCK TIRE (LIGHT DUTY)

## 适用场景/Applicable Operation Conditions

城际运输作业  
Intercity transportation operations

## 产品介绍/Product Introductions

饱满的花纹设计,提高轮胎耐磨和牵引性能,适合中、长途运输作业。

Full pattern design improves tire wear resistance and traction performance, suitable for medium to long-distance transportation operations.

## 适配车型/Compatible Models



## 技术参数/Technical Specifications

规格 Tire Size	标准轮辋 Standard Rim	层级 Ply Rating	花纹深度 Tread Depth	断面宽 Section Width	外直径 Overall Diameter	单胎负荷 Single Load	双胎负荷 Dual Load	充气气压 Pressure	行驶速度 Speed Index	有无内胎 TT/TL
			(mm)	(mm)	(mm)	(Kg)	(Kg)	(KPa)	km/h	
6.00-13LT	4.50B	10	8	170	655	750	670	560	/	TT
6.00-14LT	41/2J	10	10	170	680	800	710	560	/	TT
6.00-16LT	4.50E	10	10	170	730	850	750	530	/	TT
6.50-14LT	41/2J	10	10	180	705	900	800	530	/	TT
6.50-16LT	5.50F	12	10	185	750	1060	925	630	/	TT
7.00-15LT	5.50F	10	10	200	750	1030	925	530	/	TL
7.50-15LT	6.00G	12	10	215	780	1360	1215	630	/	TT



# GS623

BIAS TRUCK TIRE (LIGHT DUTY)

## 适用场景/Applicable Operation Conditions

城际运输作业  
Intercity transportation operations

## 产品介绍/Product Introductions

多条花纹设计导向性能好, 承载力强, 耐磨损和经济效益好, 适合中、长途运输作业。

Multiple striped pattern designs offer good Steering performance, strong load-bearing capacity, wear resistance, and economic benefits, making them suitable for medium to long-distance transportation operations.

## 适配车型/Compatible Models



## 技术参数/Technical Specifications

规格 Tire Size	标准轮辋 Standard Rim	层级 Ply Rating	花纹深度 Tread Depth (mm)	断面宽 Section Width (mm)	外直径 Overall Diameter (mm)	单胎负荷 Single Load (Kg)	双胎负荷 Dual Load (Kg)	充气气压 Pressure (KPa)	行驶速度 Speed Index km/h	有无内胎 TT/TL
6.50-16LT	5.50F	12	10	185	750	1060	925	630	/	TT
7.00-16LT	5.50F	12	10	200	775	1215	1060	630	/	TT
7.00-16LT	5.50F	14	10	200	775	1320	1180	730	/	TT
7.50-16LT	6.00G	12	11	215	805	1400	1250	630	/	TT
8.25-16LT	6.50H	12	12	235	855	1550	1360	530	/	TT



# GS624

BIAS TRUCK TIRE (LIGHT DUTY)

## 适用场景/Applicable Operation Conditions

城际运输作业  
Intercity transportation operations

## 产品介绍/Product Introductions

多条花纹设计接地面积大, 提高轮胎耐磨损和高牵引, 适合中、长途运输作业。

Multiple striped pattern designs increase the contact area, enhancing the tire's wear resistance and high traction, making it suitable for medium to long-distance transportation operations.

## 适配车型/Compatible Models



## 技术参数/Technical Specifications

规格 Tire Size	标准轮辋 Standard Rim	层级 Ply Rating	花纹深度 Tread Depth (mm)	断面宽 Section Width (mm)	外直径 Overall Diameter (mm)	单胎负荷 Single Load (Kg)	双胎负荷 Dual Load (Kg)	充气气压 Pressure (KPa)	行驶速度 Speed Index km/h	有无内胎 TT/TL
6.00-14LT	41/2J	10	10	170	680	800	710	560	/	TT
6.50-14LT	41/2J	10	10	180	705	900	800	530	/	TT
7.00-15LT	5.50F	10	10	200	750	1030	925	530	/	TL
7.50-15LT	6.00G	12	10	215	780	1360	1215	630	/	TT





# GS626

BIAS TRUCK TIRE (LIGHT DUTY)

## 适用场景/Applicable Operation Conditions

城际运输作业  
Intercity transportation operations

## 产品介绍/Product Introductions

多条花纹兼独特的钢片设计极大提高轮胎摩擦力、承载力和耐磨损性能, 适合中、长途运输作业。

Multiple striped pattern and unique steel strip designs are greatly increasing the tire's grip, enhancing load-bearing capacity, improving wear resistance, making it suitable for medium and long-distance transportation operations.

## 适配车型/Compatible Models



## 技术参数/Technical Specifications

规格 Tire Size	标准轮辋 Standard Rim	层级 Ply Rating	花纹深度 Tread Depth (mm)	断面宽 Section Width (mm)	外直径 Overall Diameter (mm)	单胎负荷 Single Load (Kg)	双胎负荷 Dual Load (Kg)	充气气压 Pressure (KPa)	行驶速度 Speed Index km/h	有无内胎 TT/TL
7.00-16LT	5.50F	14	10	200	775	1320	1180	770	/	TT
7.50-16LT	6.00G	12	11	215	805	1400	1250	670	/	TT

# GS631

BIAS TRUCK TIRE (LIGHT DUTY)

## 适用场景/Applicable Operation Conditions

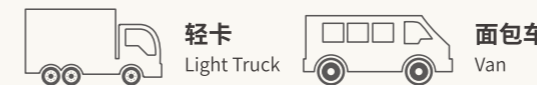
城际运输作业  
Intercity transportation operations

## 产品介绍/Product Introductions

山地花纹设计, 高通过性, 高耐磨和散热性好, 适合中、长途运输作业。

Mountainous pattern design, high passability, high wear resistance, and good heat dissipation, suitable for medium and long-distance transportation operations.

## 适配车型/Compatible Models



## 技术参数/Technical Specifications

规格 Tire Size	标准轮辋 Standard Rim	层级 Ply Rating	花纹深度 Tread Depth (mm)	断面宽 Section Width (mm)	外直径 Overall Diameter (mm)	单胎负荷 Single Load (Kg)	双胎负荷 Dual Load (Kg)	充气气压 Pressure (KPa)	行驶速度 Speed Index km/h	有无内胎 TT/TL
7.50-16LT	6.00G	12	11	215	805	1400	1250	630	/	TT
8.25-16LT	6.50H	12	12	235	855	1550	1360	530	/	TT



# GS632

## 适用场景 Applicable Operation Conditions

城际运输作业  
Intercity transportation operations

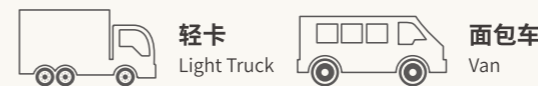
## 产品介绍 Product Introductions

混合花纹, 较强的牵引力兼顾了防侧滑能力, 通过性能极佳。

Mixed pattern, strong traction while ensuring anti-skid capability, with excellent passage performance.



## 适配车型 Compatible Models



## 技术参数 Technical Specifications

规格 Tire Size	标准轮辋 Standard Rim	层级 Ply Rating	花纹深度 Tread Depth	断面宽 Section Width	外直径 Overall Diameter	单胎负荷 Single Load	双胎负荷 Dual Load	充气气压 Pressure	行驶速度 Speed Index	有无内胎 TT/TL
			(mm)	(mm)	(mm)	(Kg)	(Kg)	(KPa)	km/h	
7.00-16LT	5.50F	12	10	200	775	1215	1060	630	/	TT
7.50-16LT	6.00G	12	11	215	805	1400	1250	630	/	TT
8.25-16LT	6.50H	12	12	235	855	1550	1360	530	/	TT

# GS613

BIAS TRUCK TIRE (HEAVY DUTY)

## 适用场景/Applicable Operation Conditions

城际运输作业  
Intercity transportation operations

## 产品介绍/Product Introductions

花纹以横向花纹为主, 花纹沟较宽较深, 能够提高对路面的抓着力, 提供优越的牵引力, 适合中、长途运输作业。

The pattern is primarily horizontal, with wider and deeper grooves that enhance grip on the road, providing superior traction, making it suitable for medium to long-distance transportation operations.

## 适配车型/Compatible Models



## 技术参数/Technical Specifications

规格 Tire Size	标准轮辋 Standard Rim	层级 Ply Rating	花纹深度 Tread Depth (mm)	断面宽 Section Width (mm)	外直径 Overall Diameter (mm)	单胎负荷 Single Load (Kg)	双胎负荷 Dual Load (Kg)	充气压 Pressure (KPa)	行驶速度 Speed Index km/h	有无内胎 TT/TL
7.00-20	5.5	12	12	200	904	1600	1400	740/670	/	TT

# GS614

BIAS TRUCK TIRE (HEAVY DUTY)

## 适用场景/Applicable Operation Conditions

城际运输作业  
Intercity transportation operations

## 产品介绍/Product Introductions

花纹以横向花纹为主, 花纹沟较宽较深, 能够提高对路面的抓着力, 提供优越的牵引力, 适合中、长途运输作业。

The pattern is primarily horizontal, with wider and deeper grooves that enhance grip on the road, providing superior traction, making it suitable for medium to long-distance transportation operations.

## 适配车型/Compatible Models



## 技术参数/Technical Specifications

规格 Tire Size	标准轮辋 Standard Rim	层级 Ply Rating	花纹深度 Tread Depth (mm)	断面宽 Section Width (mm)	外直径 Overall Diameter (mm)	单胎负荷 Single Load (Kg)	双胎负荷 Dual Load (Kg)	充气压 Pressure (KPa)	行驶速度 Speed Index km/h	有无内胎 TT/TL
7.50-20	6.0	12	12	215	935	1800	1600	740/670	/	TT
8.25-20	6.5	12	12.5	236	974	2060	1800	700/630	/	TT
9.00-20	7.0	14	14	259	1018	2575	2300	770/700	/	TT
9.00-20	7.0	16	14	259	1018	2900	2500	880/810	/	TT
10.00-20	7.5	14	14.5	278	1055	2800	2430	700/630	/	TT
10.00-20	7.5	16	14.5	278	1055	3000	2650	810/740	/	TT



# GS625

BIAS TRUCK TIRE (HEAVY DUTY)

## 适用场景/Applicable Operation Conditions

城际运输作业  
Intercity transportation operations

## 产品介绍/Product Introductions

多条花纹设计, 增大摩擦力, 提高承载力和耐磨损性能, 适合中、长途运输作业。

Multiple striped pattern designs increase friction, enhancing load-bearing capacity, and improving wear resistance, making it suitable for medium and long-distance transportation operations.

## 适配车型/Compatible Models



## 技术参数/Technical Specifications

规格 Tire Size	标准轮辋 Standard Rim	层级 Ply Rating	花纹深度 Tread Depth (mm)	断面宽 Section Width (mm)	外直径 Overall Diameter (mm)	单胎负荷 Single Load (Kg)	双胎负荷 Dual Load (Kg)	充气气压 Pressure (KPa)	行驶速度 Speed Index km/h	有无内胎 TT/TL
8.25-20	6.5	12	12.5	236	974	2060	1800	700/630	/	TT
9.00-20	7.0	14	14	259	1018	2575	2300	770/700	/	TT
9.00-20	7.0	16	14	259	1018	2900	2500	880/810	/	TT
10.00-20	7.5	14	14.5	278	1055	2800	2430	700/630	/	TT
10.00-20	7.5	16	14.5	278	1055	3000	2650	810/740	/	TT



# GS627

RV TIRE

## 适用场景/Applicable Operation Conditions

城际运输作业  
Intercity transportation operations

## 产品介绍/Product Introductions

多条花纹兼独特花纹肩部设计, 提高承载力、耐磨损性能和散热性, 适合中、长途运输作业。

Multiple striped pattern and unique shoulder designs are enhancing load-bearing capacity, and improving wear resistance, making it suitable for medium and long-distance transportation operations.

## 适配车型/Compatible Models



## 技术参数/Technical Specifications

规格 Tire Size	标准轮辋 Standard Rim	层级 Ply Rating	花纹深度 Tread Depth (mm)	断面宽 Section Width (mm)	外直径 Overall Diameter (mm)	单胎负荷 Single Load (Kg)	双胎负荷 Dual Load (Kg)	充气气压 Pressure (KPa)	行驶速度 Speed Index km/h	有无内胎 TT/TL
8-14.5	6.00MH	12	5.5	203	707	1285	/	690	/	TL



# GS628

TRAILLER TIRE

## 适用场景/Applicable Operation Conditions

城际运输作业  
Intercity transportation operations

## 产品介绍/Product Introductions

高饱和条形花纹设计, 增加轮胎抓着力, 适合中、长途运输作业。  
High-saturation striped pattern design increases tire grip, suitable for medium and long-distance transportation operations.

## 适配车型/Compatible Models



## 技术参数/Technical Specifications

规格 Tire Size	标准轮辋 Standard Rim	层级 Ply Rating	花纹深度 Tread Depth	断面宽 Section Width	外直径 Overall Diameter	单胎负荷 Single Load	双胎负荷 Dual Load	充气气压 Pressure	行驶速度 Speed Index	有无内胎 TT/TL
			(mm)	(mm)	(mm)	(Kg)	(Kg)	(KPa)	km/h	
ST205/90D15	5 1/2J	12	10	202	752	1450	1260	650	/	TL
ST225/90D16	6J	12	10	220	808	1800	1600	660	/	TL



# GS701

SAND TIRE

## 适用场景/Applicable Operation Conditions

适用于松软沙土作业  
Applicable to soft sandy soil operations

## 产品介绍/Product Introductions

花纹深度浅, 较好的驱动性能。  
Shallow tread depth for better driving performance.

独特的配方, 提升轮胎耐高温和磨损。  
A unique formula improves the tire's resistance to high temperature and wear.

## 适配车型/Compatible Models



## 技术参数/Technical Specifications

规格 Tire Size	标准轮辋 Standard Rim	层级 Ply Rating	花纹深度 Tread Depth	断面宽 Section Width	外直径 Overall Diameter	单胎负荷 Single Load	双胎负荷 Dual Load	充气气压 Pressure	行驶速度 Speed Index	有无内胎 TT/TL
			(mm)	(mm)	(mm)	(Kg)	(Kg)	(KPa)	km/h	
12.00-20	10.00W	12	15	325	1175	3200	/	250	10	TT





# GS702

SAND TIRE

## 适用场景/Applicable Operation Conditions

适用于松软沙土作业  
Applicable to soft sandy soil operations

## 产品介绍/Product Introductions

超大胎体的设计, 增加轮胎浮力性, 增强轮胎的通过性能。  
The design of the larger tire body increases the buoyancy of the tire and enhances its passage performance.

独特的配方, 提升轮胎耐高温和磨损。  
A unique formula improves the tire's resistance to high temperature and wear.



## 适配车型/Compatible Models



## 技术参数/Technical Specifications

规格 Tire Size	标准轮辋 Standard Rim	层级 Ply Rating	花纹深度 Tread Depth	断面宽 Section Width	外直径 Overall Diameter	单胎负荷 Single Load	双胎负荷 Dual Load	充气气压 Pressure	行驶速度 Speed Index	有无内胎 TT/TL
			(mm)	(mm)	(mm)	(Kg)	(Kg)	(KPa)	km/h	
14.00-20	10.00W	18	9	375	1220	4000	/	250	10	TT
14.00-20	10.00W	20	9	375	1220	4450	/	300	10	TT
16.00-20	11.25	16	10	430	1390	4800	/	400	10	TT

# GS703

SAND TIRE

## 适用场景/Applicable Operation Conditions

适用于松软沙土作业  
Applicable to soft sandy soil operations

## 产品介绍/Product Introductions

超大胎体的设计, 增加轮胎浮力性, 增强轮胎的通过性能。  
The design of the larger tire body increases the buoyancy of the tire and enhances its passage performance.

独特的配方, 提升轮胎耐高温和磨损。  
A unique formula improves the tire's resistance to high temperature and wear.



## 适配车型/Compatible Models



## 技术参数/Technical Specifications

规格 Tire Size	标准轮辋 Standard Rim	层级 Ply Rating	花纹深度 Tread Depth	断面宽 Section Width	外直径 Overall Diameter	单胎负荷 Single Load	双胎负荷 Dual Load	充气气压 Pressure	行驶速度 Speed Index	有无内胎 TT/TL
			(mm)	(mm)	(mm)	(Kg)	(Kg)	(KPa)	km/h	
14.00-20	10	18	9	330	1215	4000	/	250	10	TT



# GS705

SAND TIRE

## 适用场景/Applicable Operation Conditions

适用于松软沙土作业  
Applicable to soft sandy soil operations

## 产品介绍/Product Introductions

超大胎体的设计,增加轮胎浮力性,增强轮胎的通过性能。  
The design of the larger tire body increases the buoyancy of the tire and enhances its passage performance.

独特的配方,提升轮胎耐高温和磨损。  
A unique formula improves the tire's resistance to high temperature and wear.



## 适配车型/Compatible Models



沙漠房车  
Desert RV Tires



拖车  
Trailers

## 技术参数/Technical Specifications

规格 Tire Size	标准轮辋 Standard Rim	层级 Ply Rating	花纹深度 Tread Depth	断面宽 Section Width	外直径 Overall Diameter	单胎负荷 Single Load	双胎负荷 Dual Load	充气气压 Pressure	行驶速度 Speed Index	有无内胎 TT/TL
			(mm)	(mm)	(mm)	(Kg)	(Kg)	(KPa)	km/h	
9.00-16	6.50H	8	8	245	890	1650	/	250	10	TT/TL
9.00-17	6.50H	10	8.5	250	915	1800	/	250	10	TT/TL

# GS706

SAND TIRE

## 适用场景/Applicable Operation Conditions

适用于松软沙土作业  
Applicable to soft sandy soil operations

## 产品介绍/Product Introductions

超大胎体的设计,增加轮胎浮力性,增强轮胎的通过性能。  
The design of the larger tire body increases the buoyancy of the tire and enhances its passage performance.

独特的配方,提升轮胎耐高温和磨损。  
A unique formula improves the tire's resistance to high temperature and wear.



## 适配车型/Compatible Models



沙漠房车  
Desert RV Tires



拖车  
Trailers

## 技术参数/Technical Specifications

规格 Tire Size	标准轮辋 Standard Rim	层级 Ply Rating	花纹深度 Tread Depth	断面宽 Section Width	外直径 Overall Diameter	单胎负荷 Single Load	双胎负荷 Dual Load	充气气压 Pressure	行驶速度 Speed Index	有无内胎 TT/TL
			(mm)	(mm)	(mm)	(Kg)	(Kg)	(KPa)	km/h	
14.00-20	10	18	9	330	1215	4000	/	250	10	TT